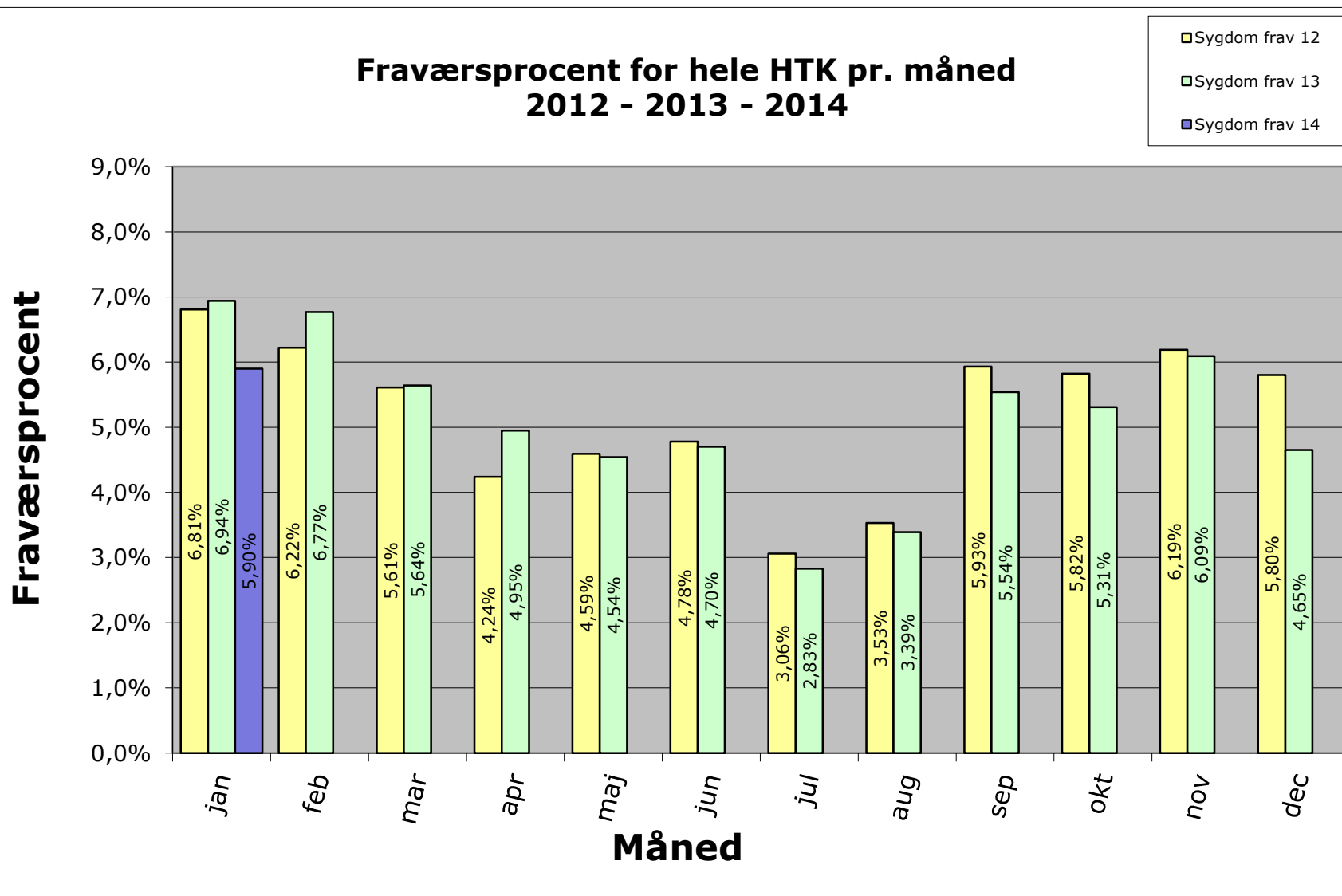


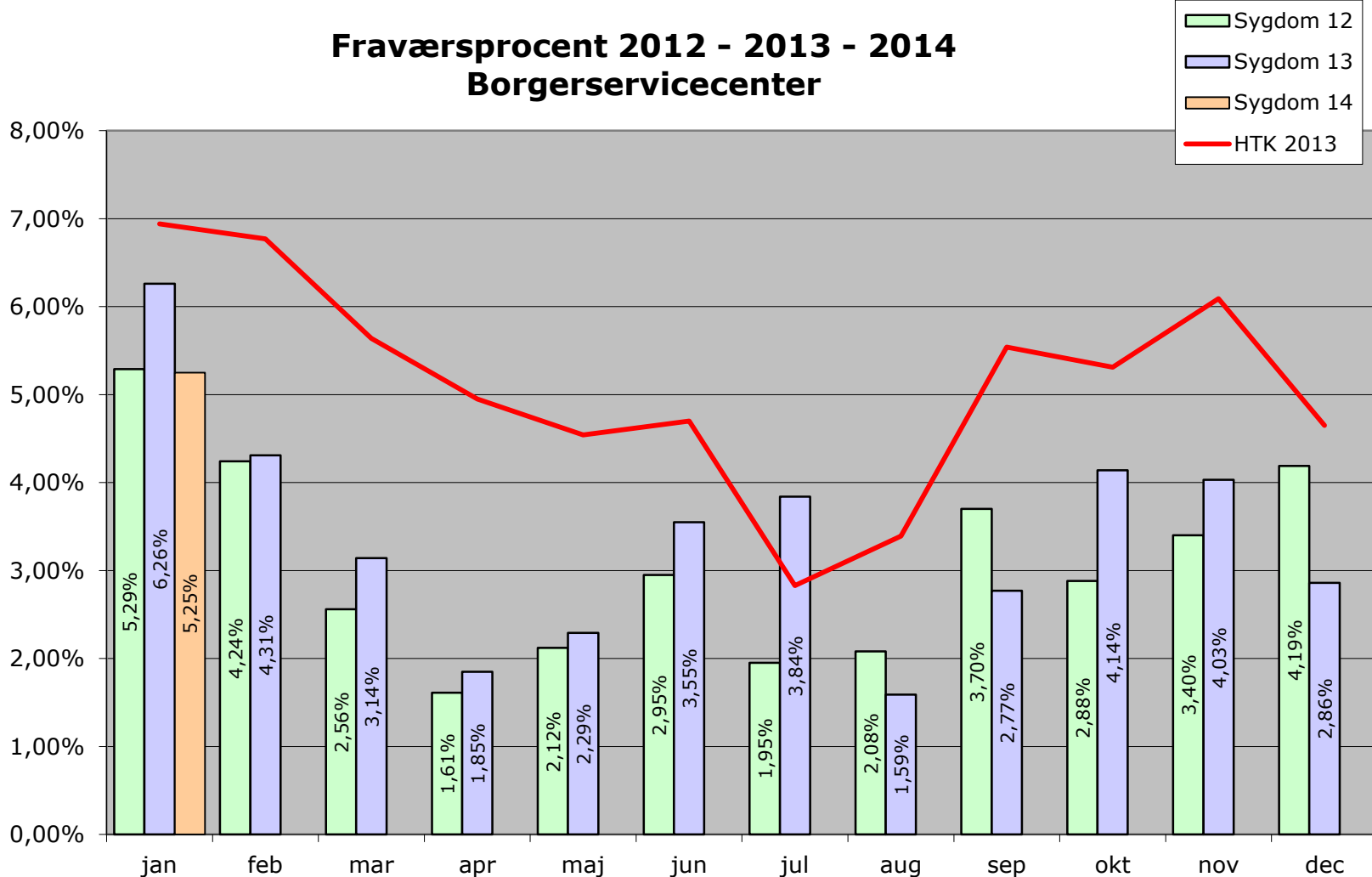


Fraværsprocent for hele HTK pr. måned 2012 - 2013 - 2014





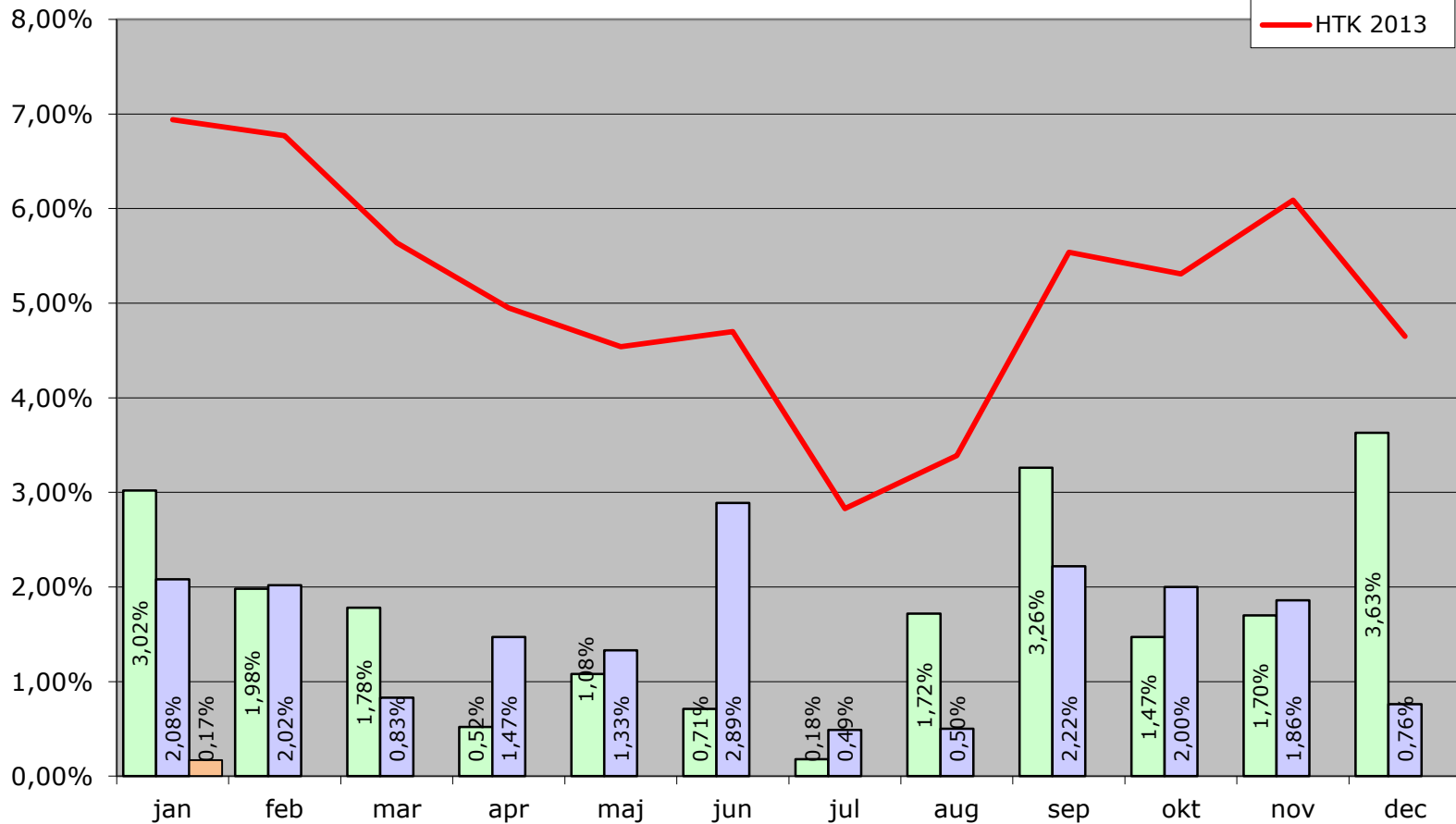
Fraværsprocent 2012 - 2013 - 2014 Borgerservicecenter





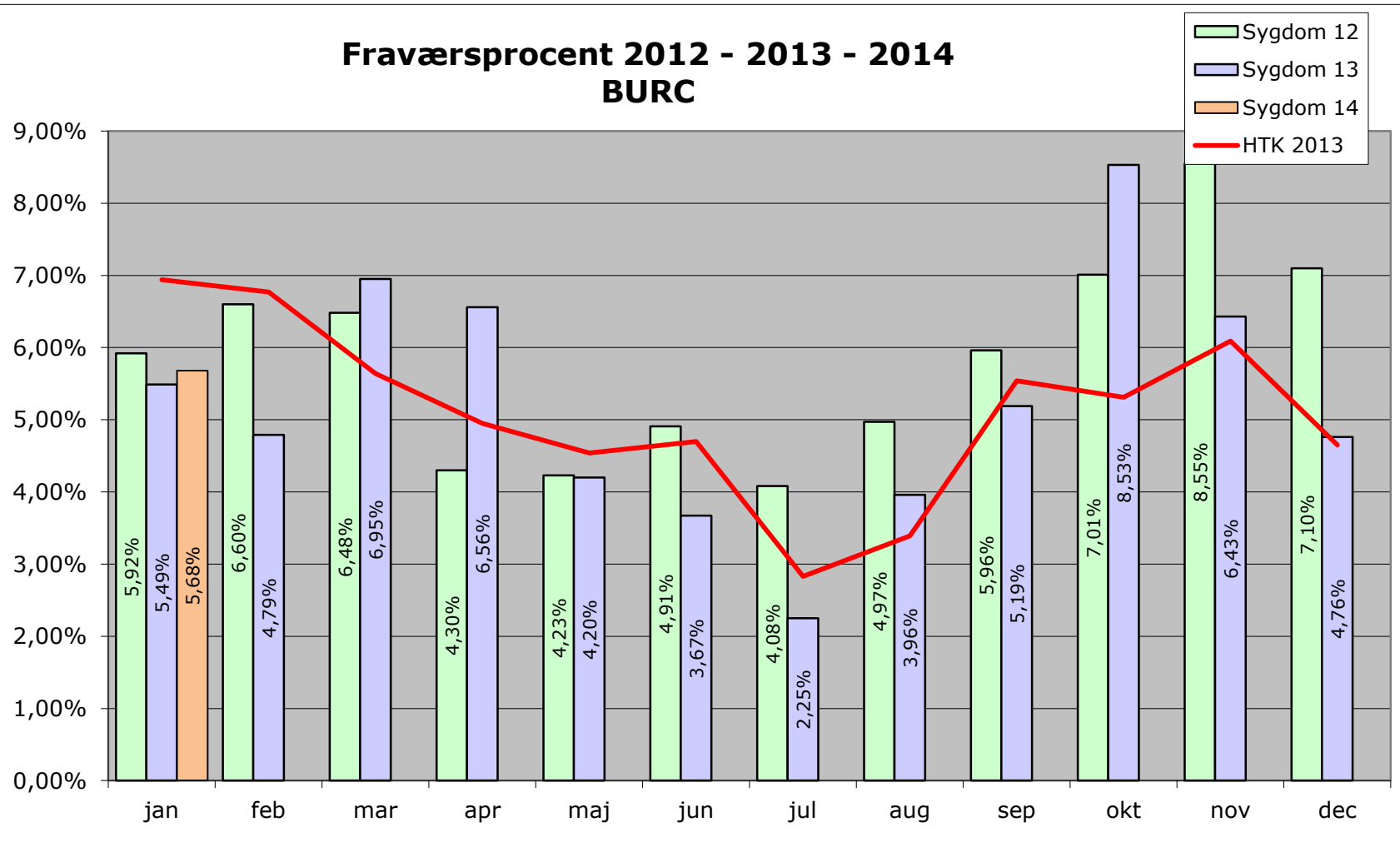
Fraværsprocent 2012 - 2013 - 2014
Byrådscentret

- Sygdom 12
- Sygdom 13
- Sygdom 14
- HTK 2013



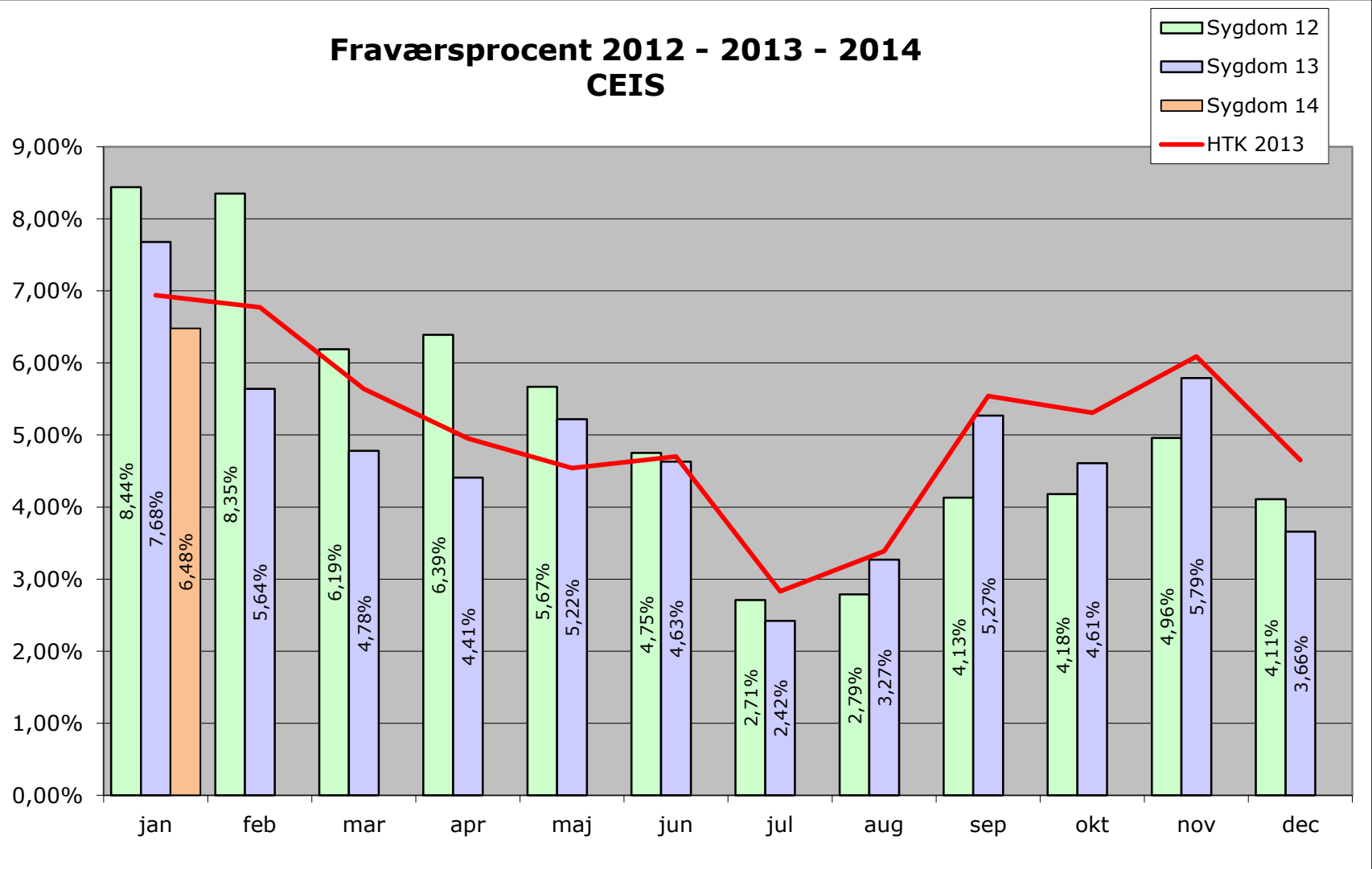


Fraværsprocent 2012 - 2013 - 2014 BURC



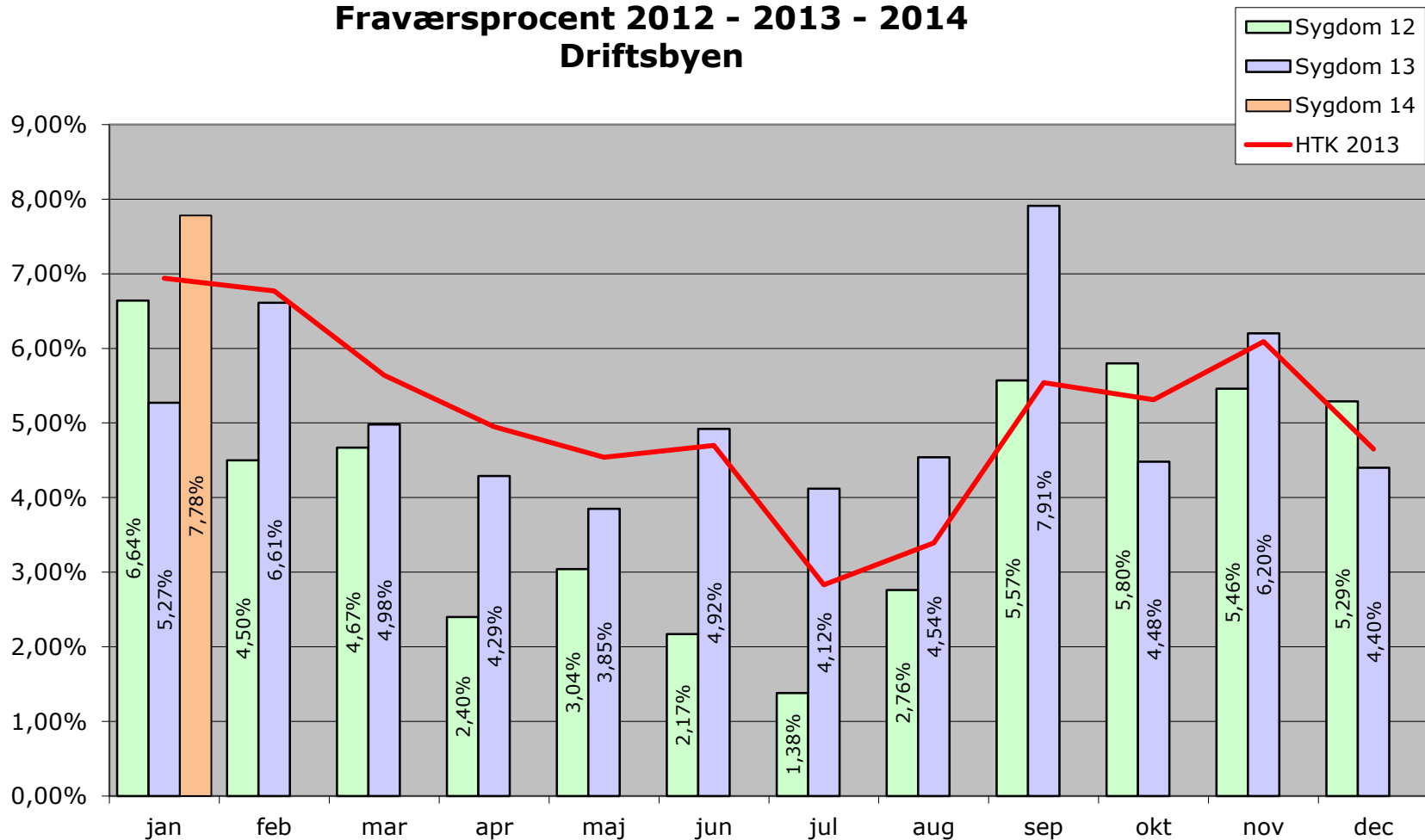


Fraværsprocent 2012 - 2013 - 2014 CEIS





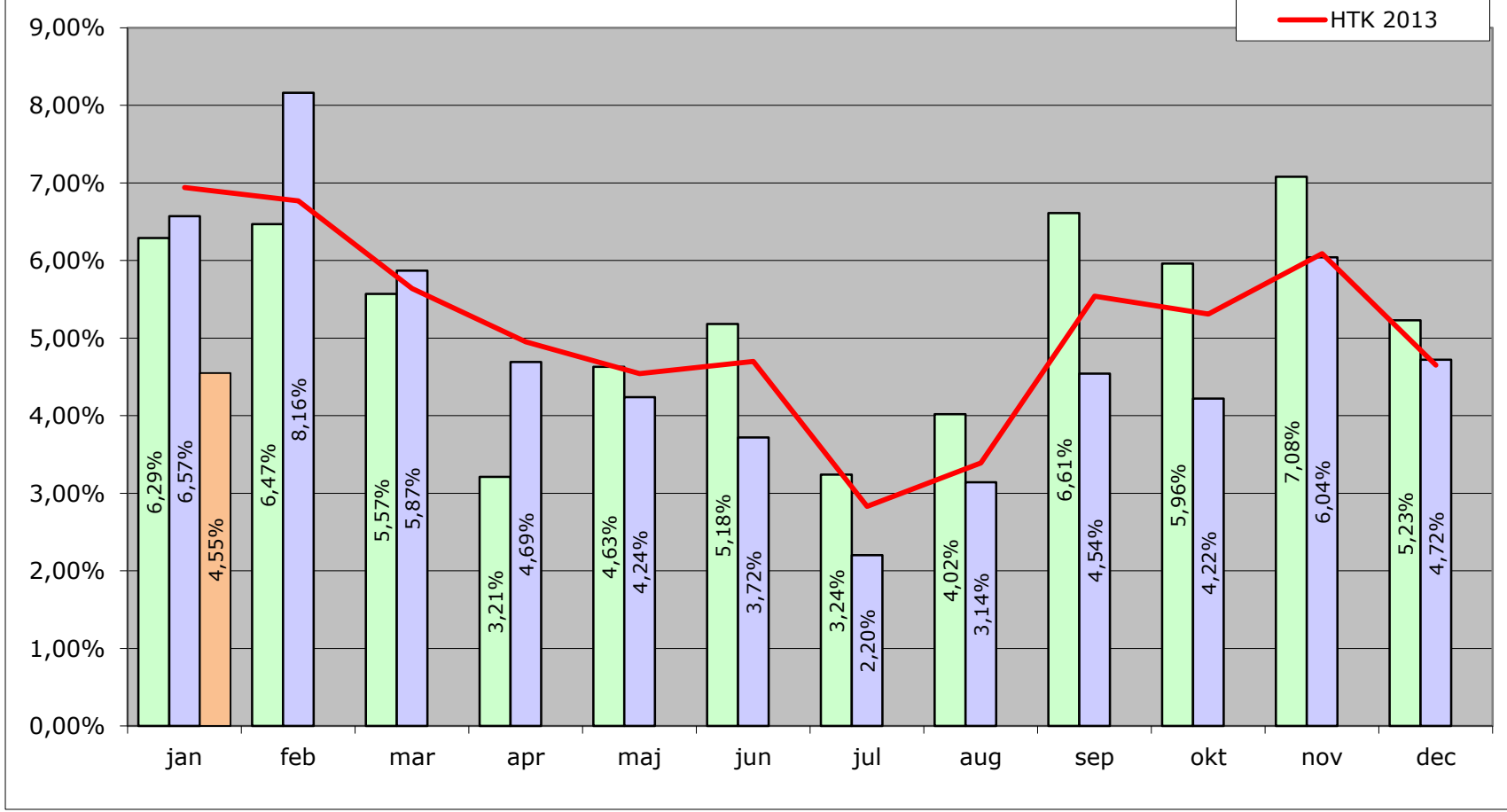
Fraværsprocent 2012 - 2013 - 2014 Driftsbyen





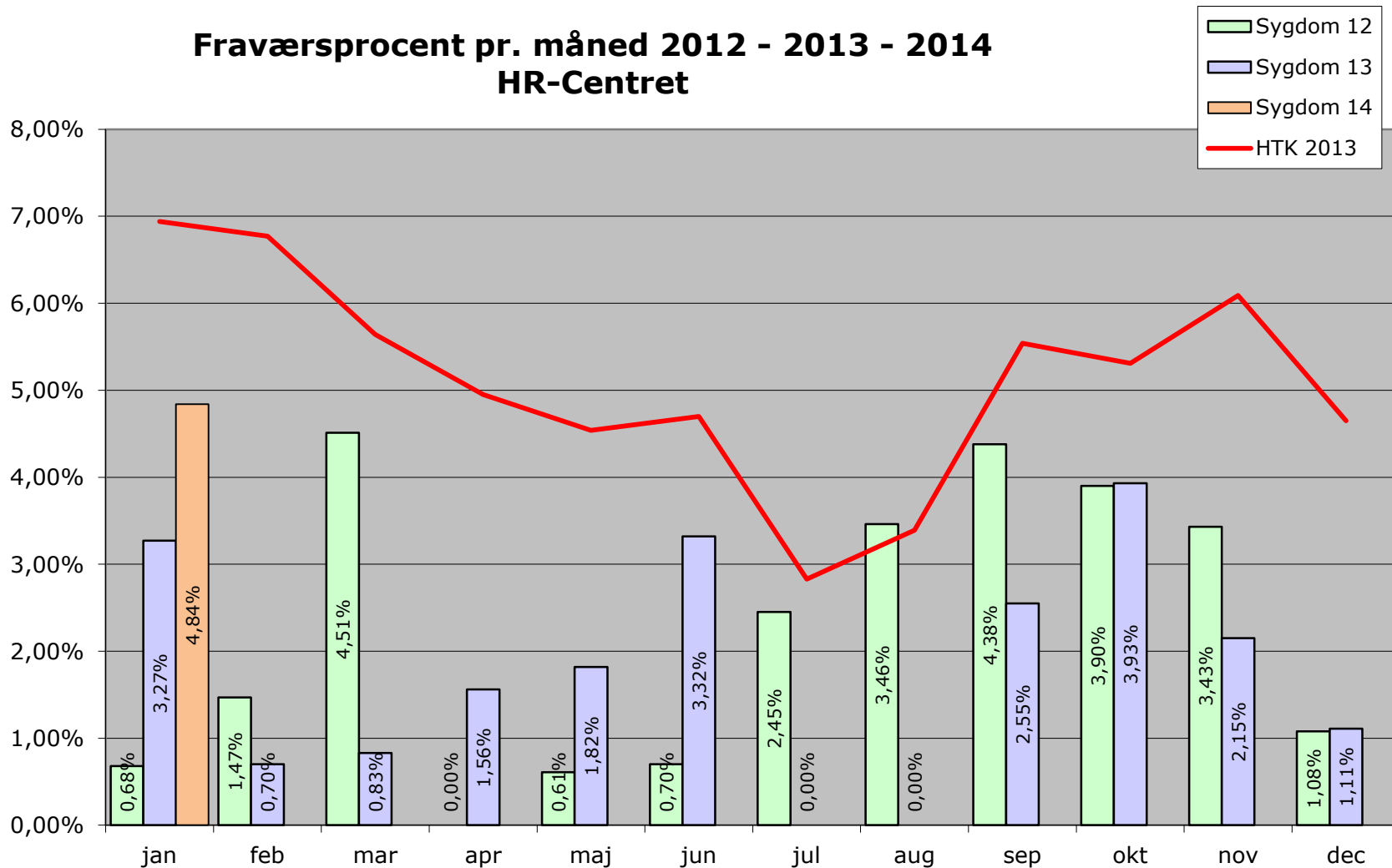
Fraværsprocent 2012 - 2013 - 2014 Fritid og Kultur

- Sygd 12
- Sygd 13
- Sygd 14
- HTK 2013



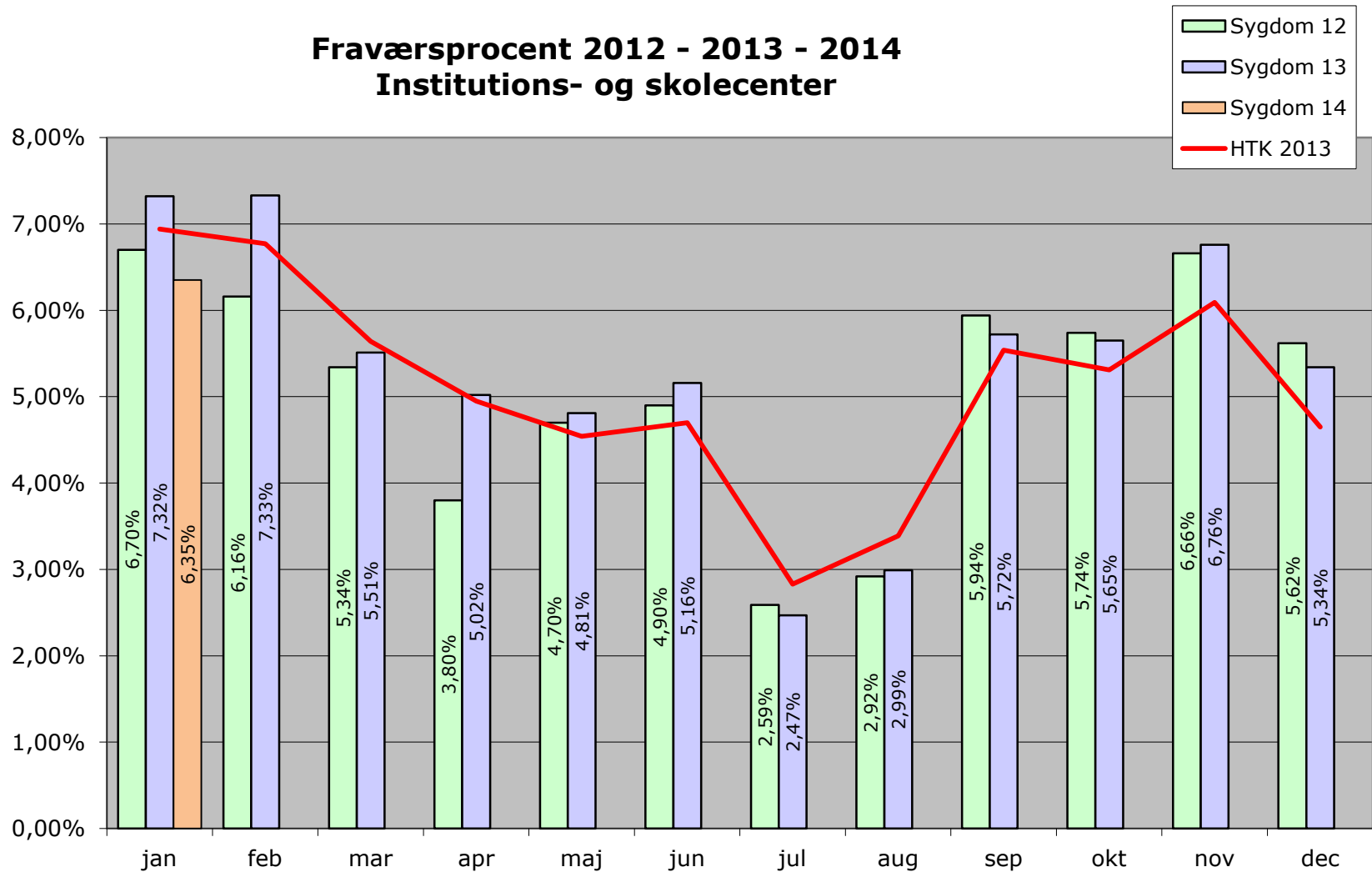


Fraværsprocent pr. måned 2012 - 2013 - 2014 HR-Centret



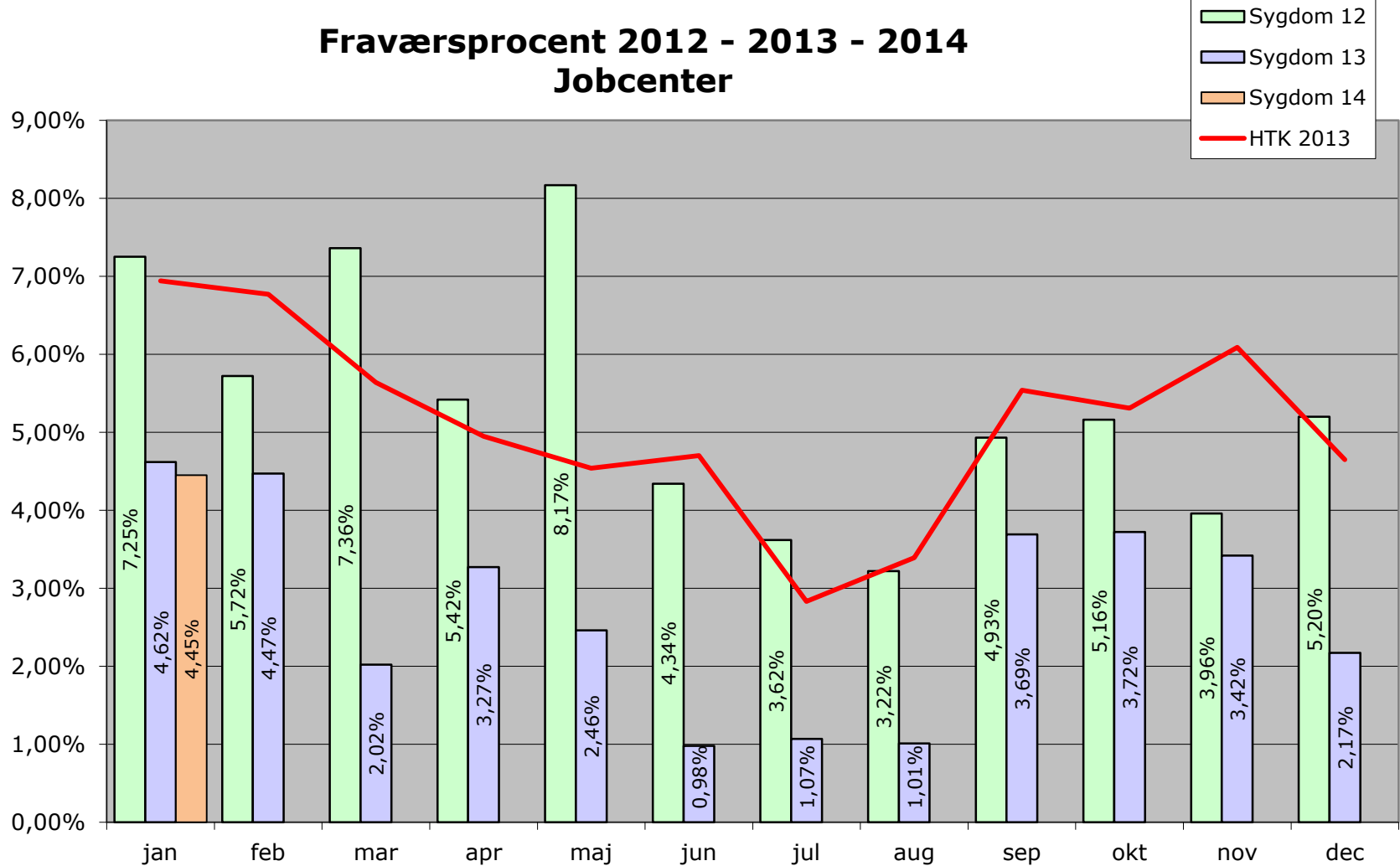


Fraværsprocent 2012 - 2013 - 2014 Institutions- og skolecenter



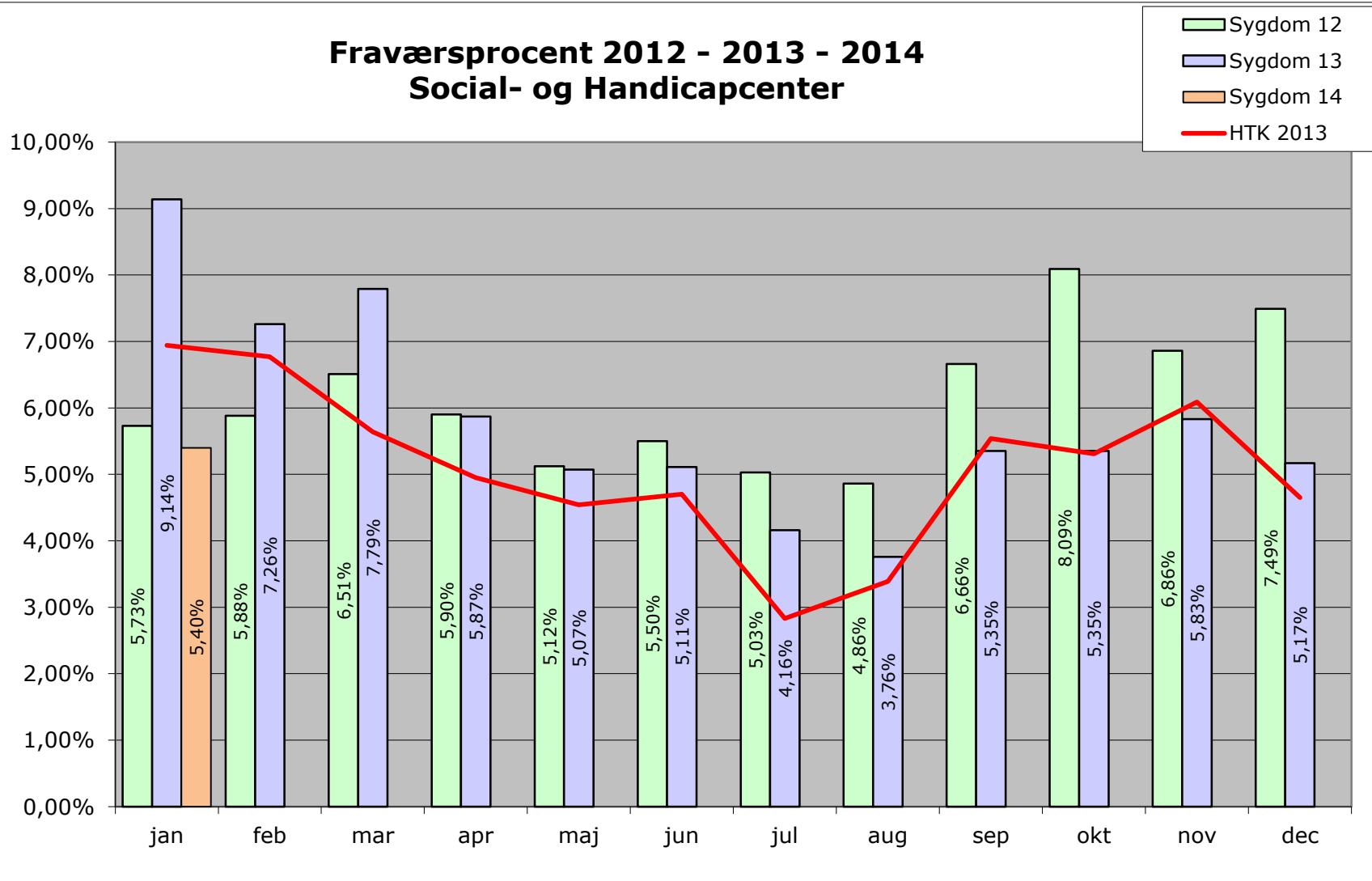


Fraværsprocent 2012 - 2013 - 2014 Jobcenter





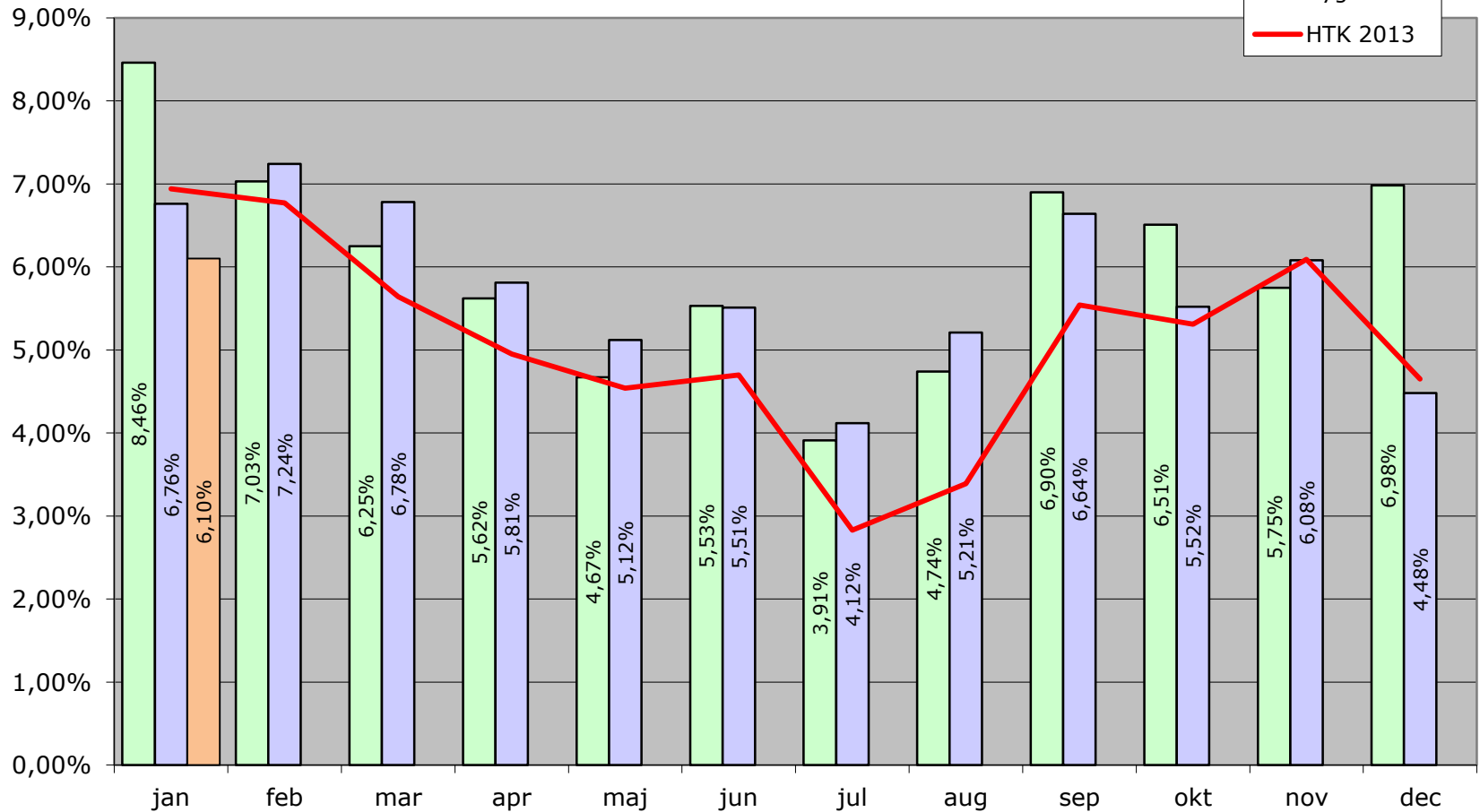
Fraværsporcet 2012 - 2013 - 2014 Social- og Handicapcenter





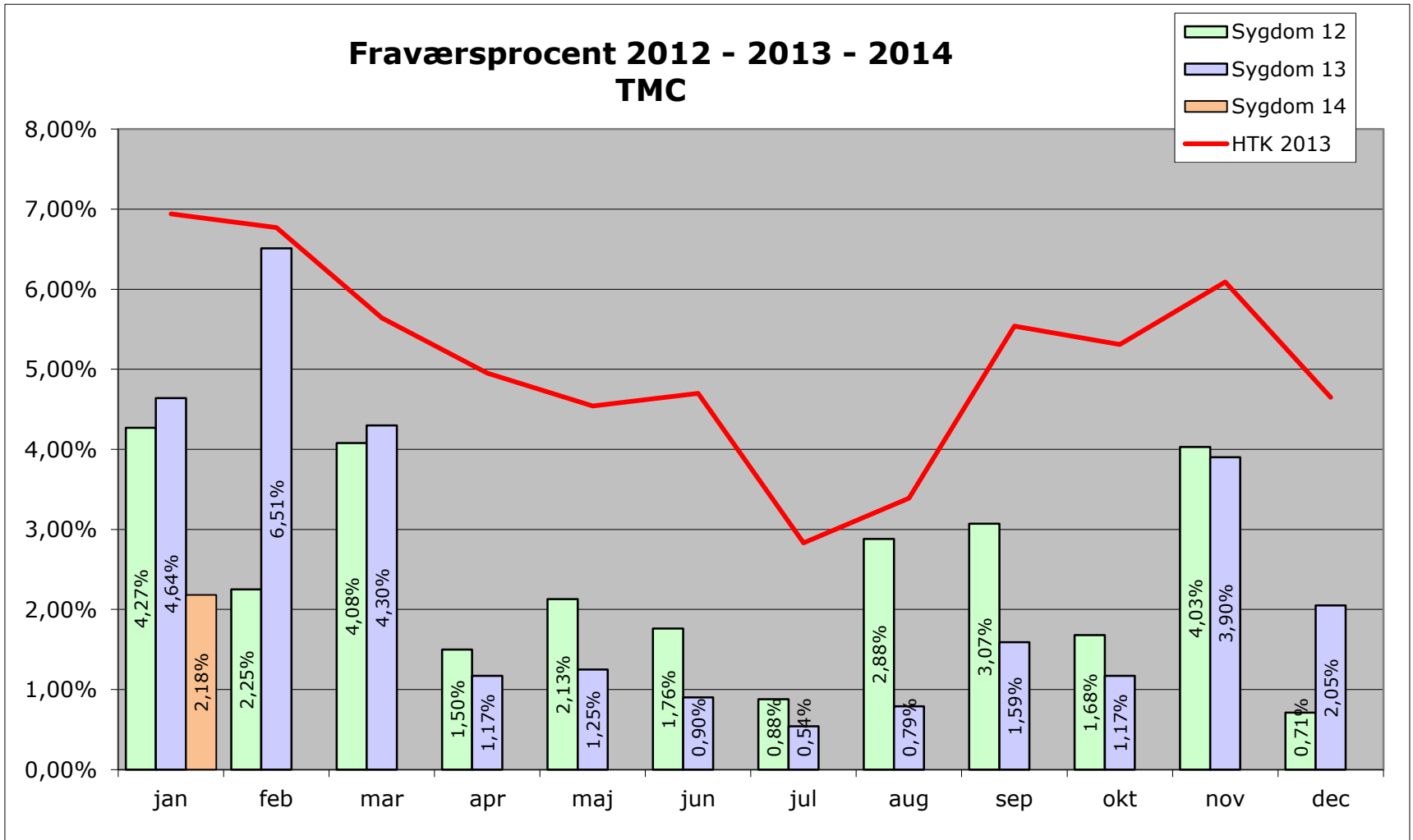
Fraværsprocent 2012 - 2013 - 2014 Sundheds- og Omsorgscentret

- Sygdom 12
- Sygdom 13
- Sygdom 14
- HTK 2013





Fraværsprocent 2012 - 2013 - 2014 TMC





Fraværsprocent 2012 - 2013 - 2014 ØDC

