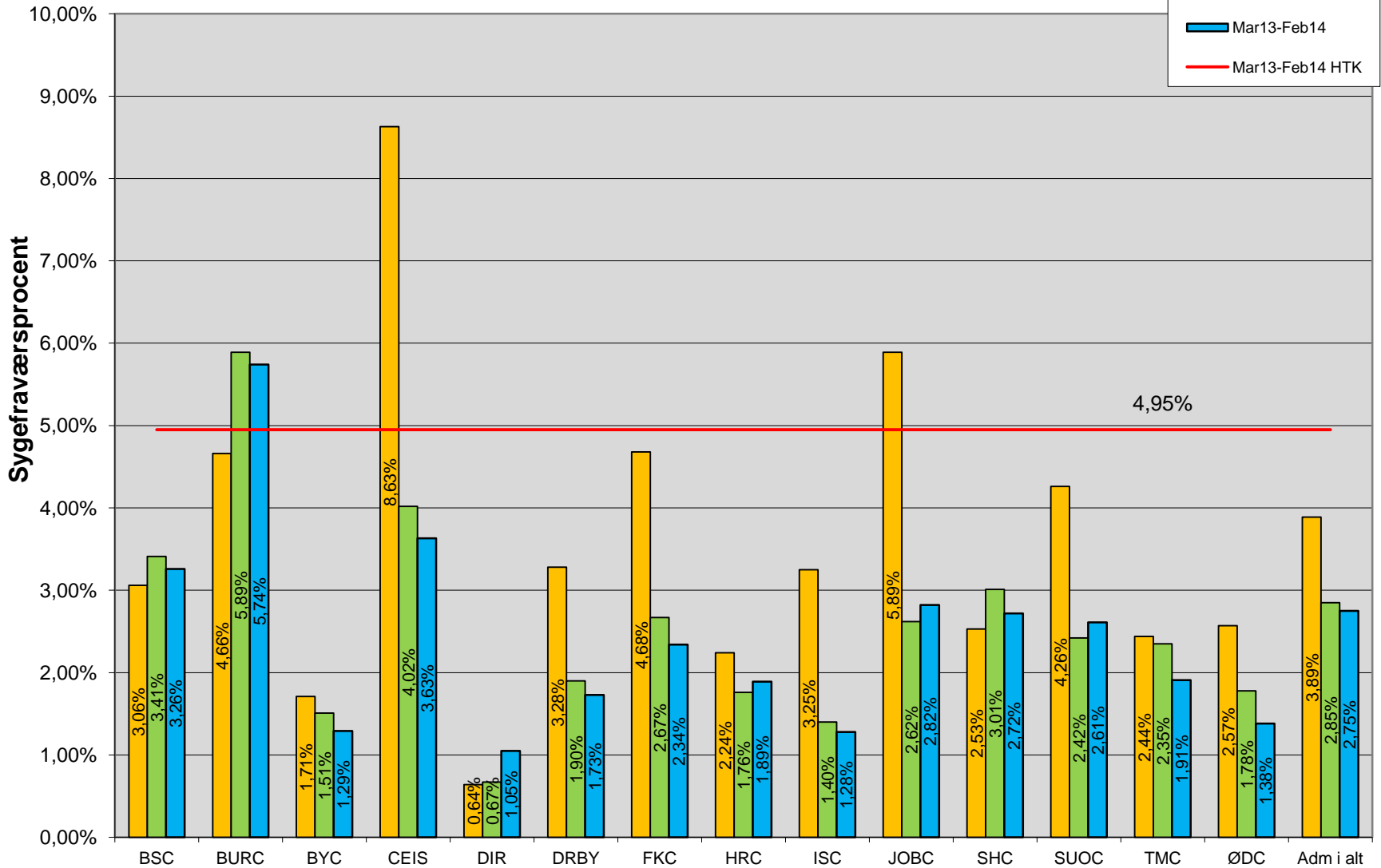
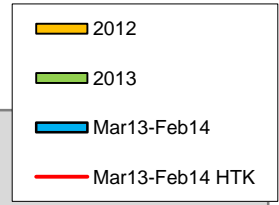
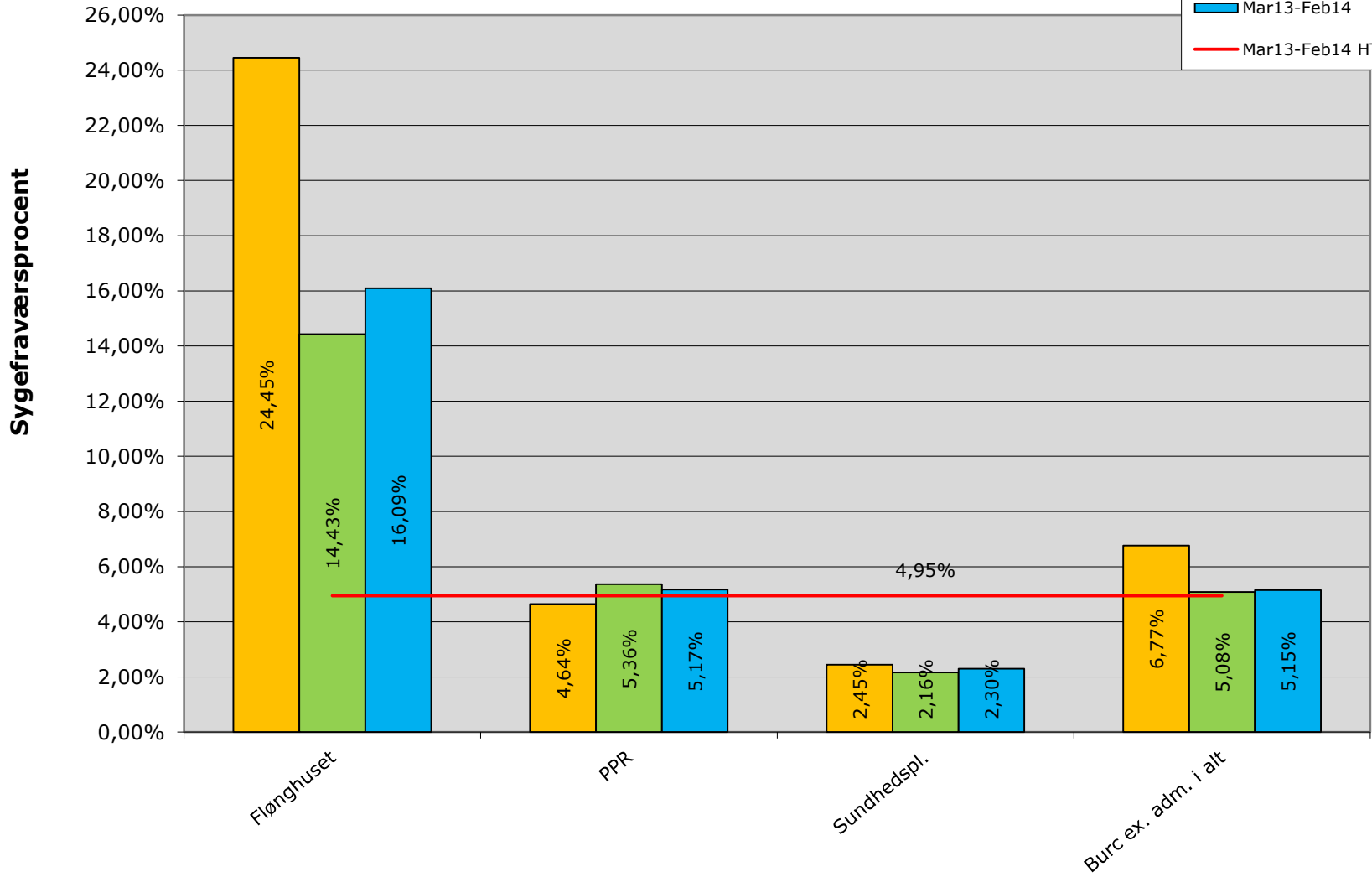
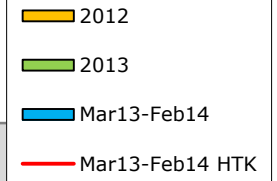


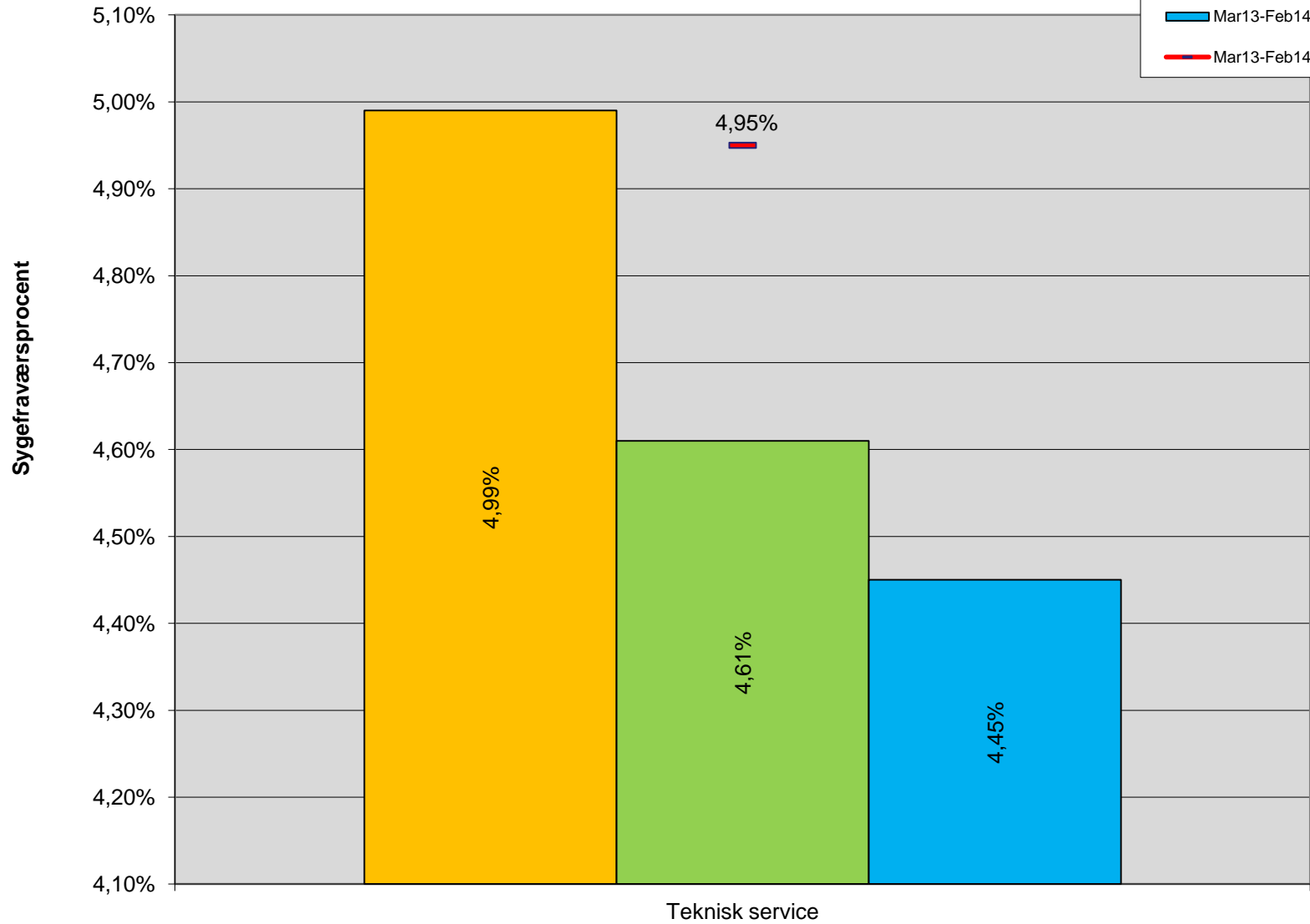
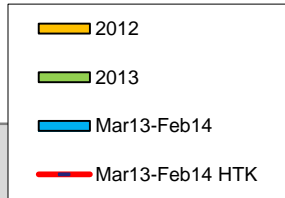
## Sygefraværsprocent 2012-2014 Administrationen



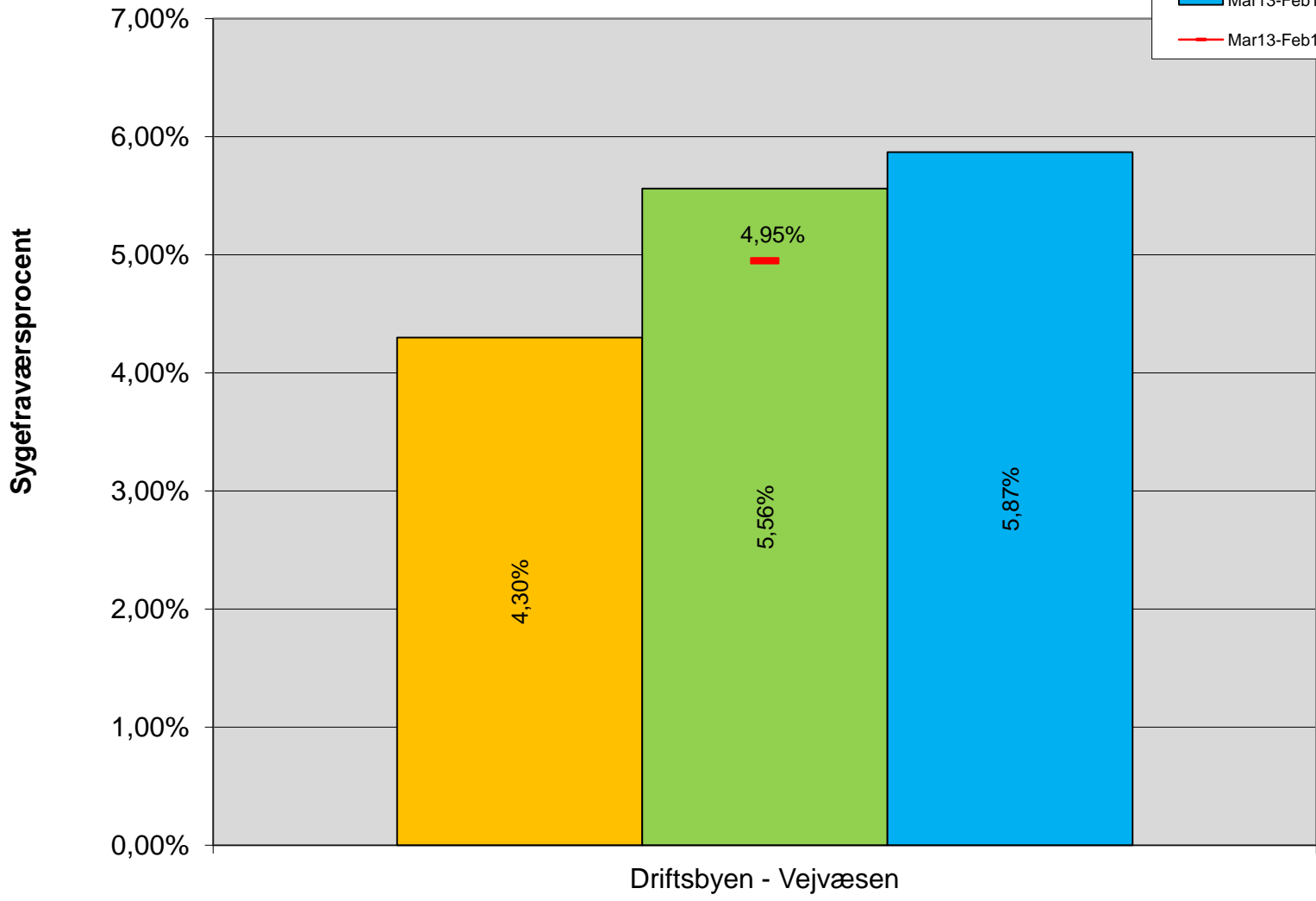
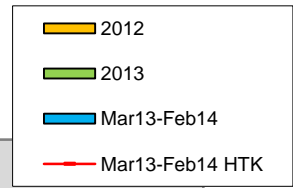
### Sygefraværsprocent 2012-2014 BURC - excl. administrationen



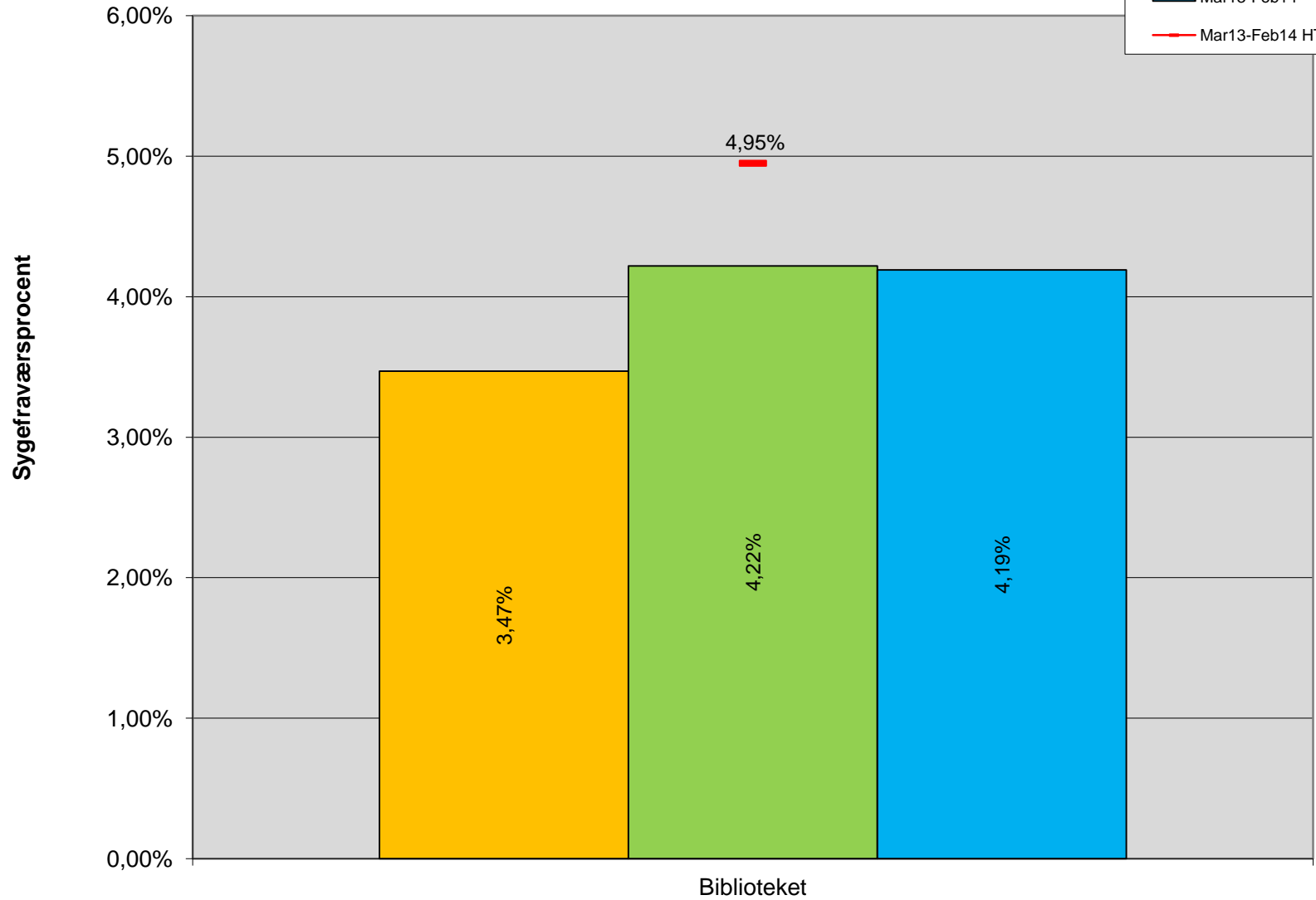
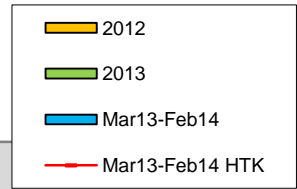
### Sygefraværsprocent 2012-2014 Teknisk Service



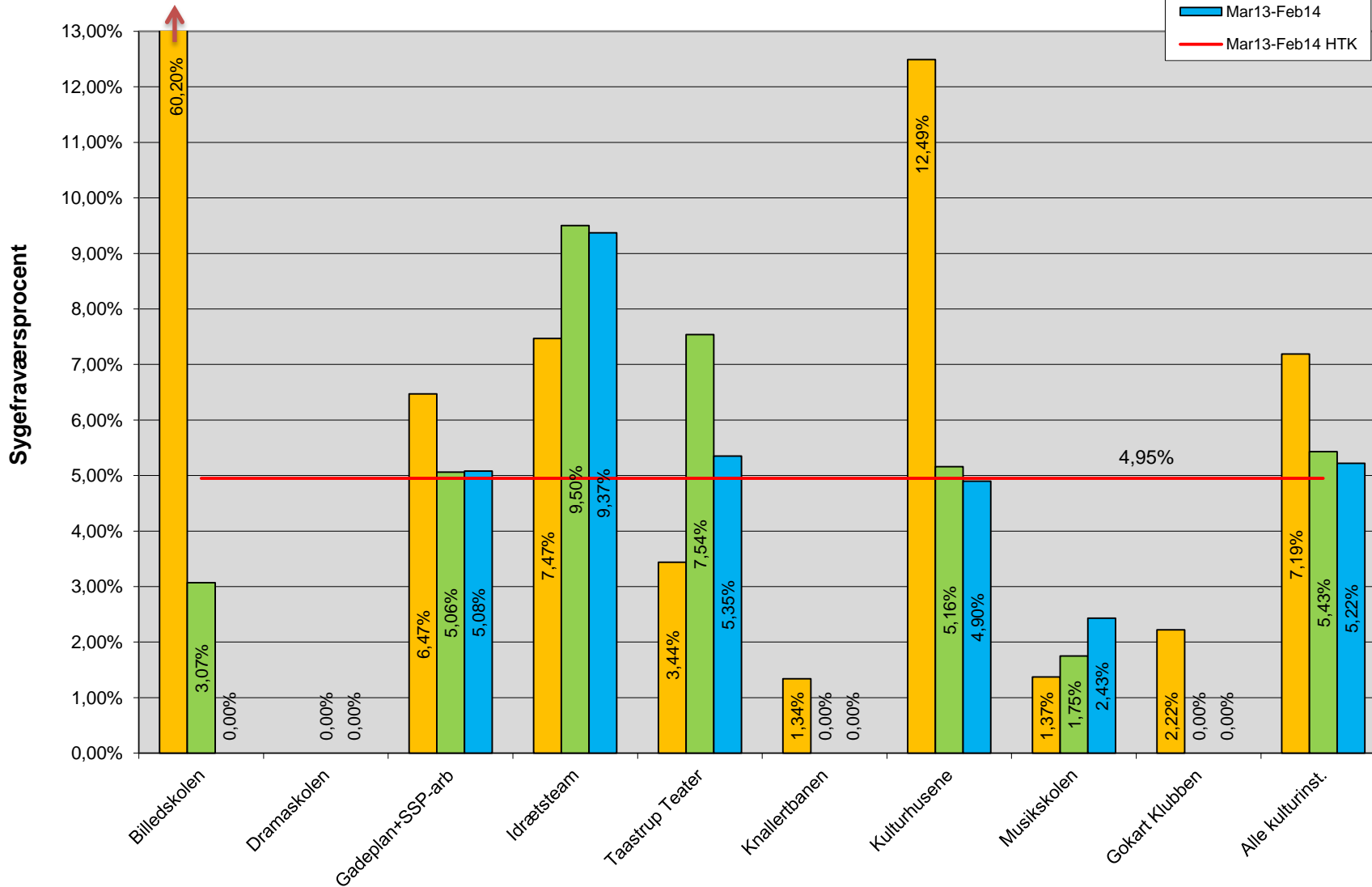
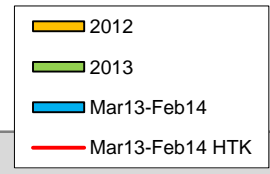
### Sygefraværsprocent 2012-2014 Driftsbyen, Vejvæsen - excl. administrationen



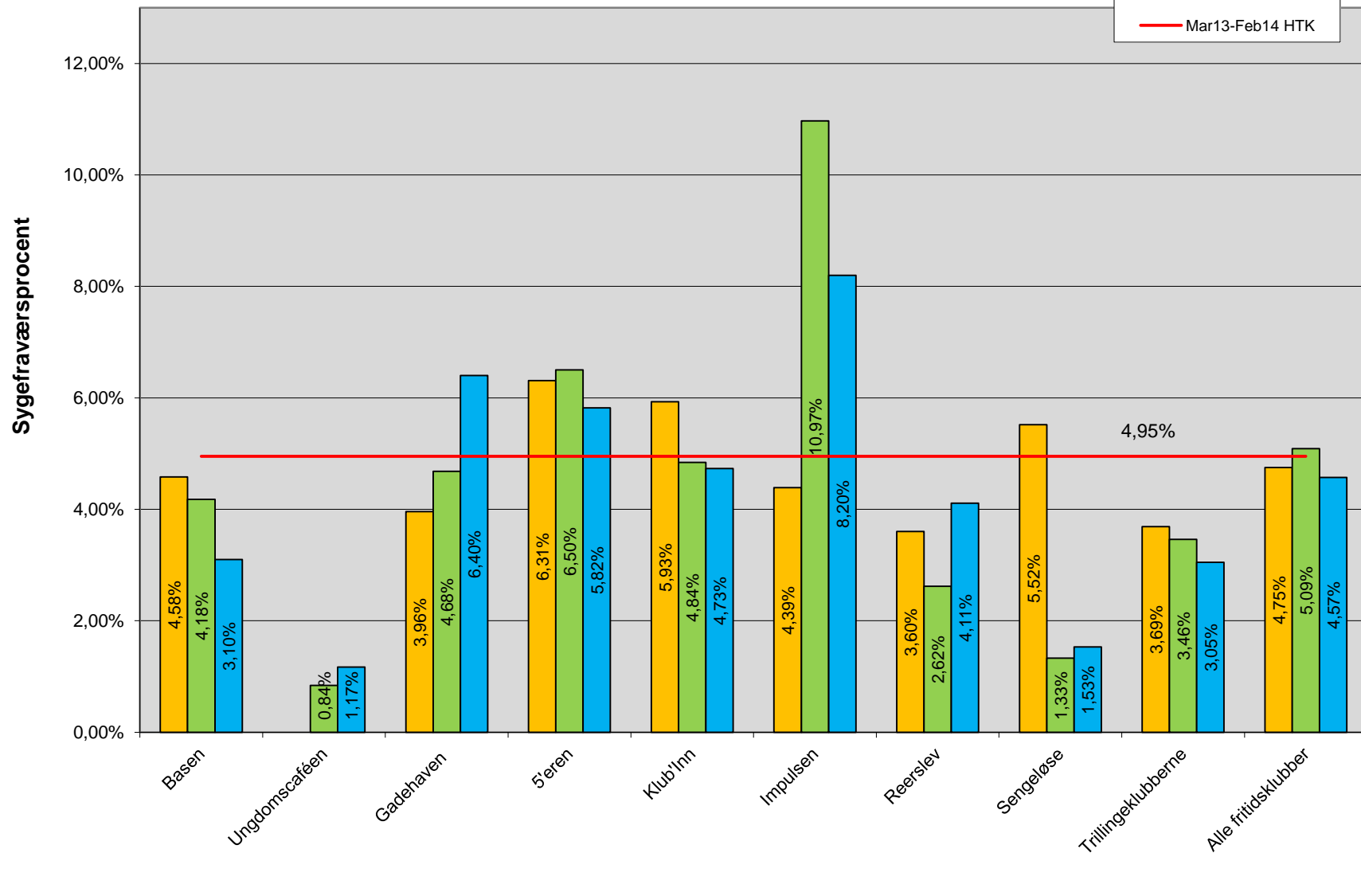
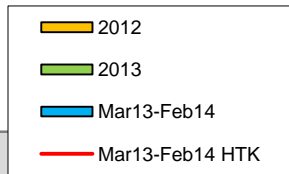
### Sygefraværsprocent 2012-2014 Biblioteket



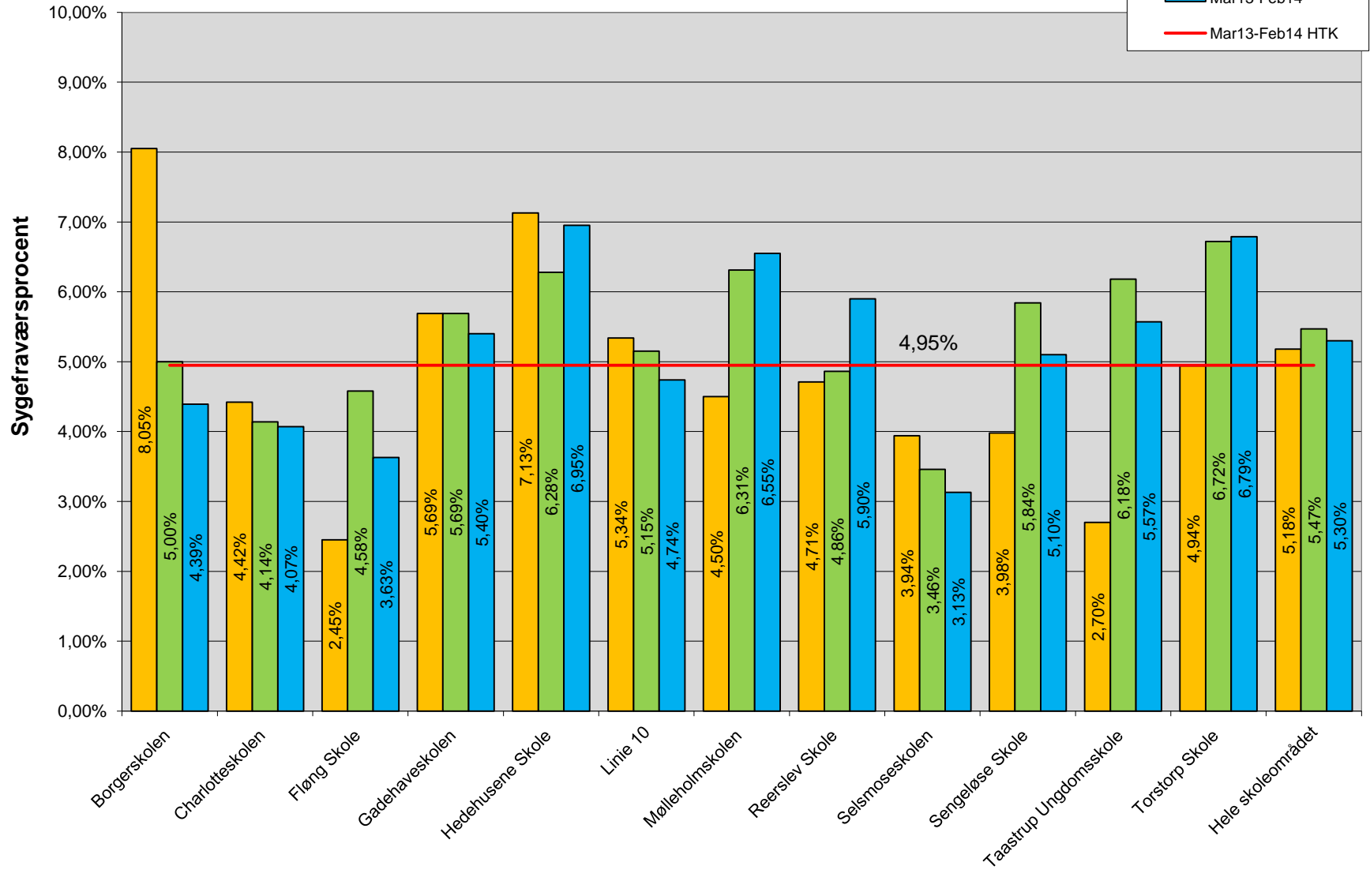
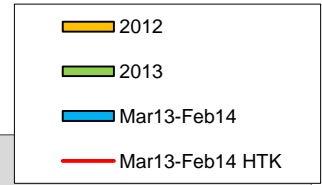
## Sygefraværsprocent 2012-2014 Kulturinstitutioner



## Sygefraværsprocent 2012-2014 Fritidsklubber

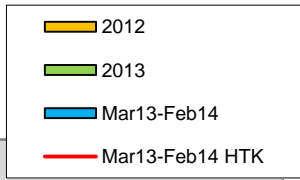


## Sygefraværsprocent 2012-2014 Skoleområdet

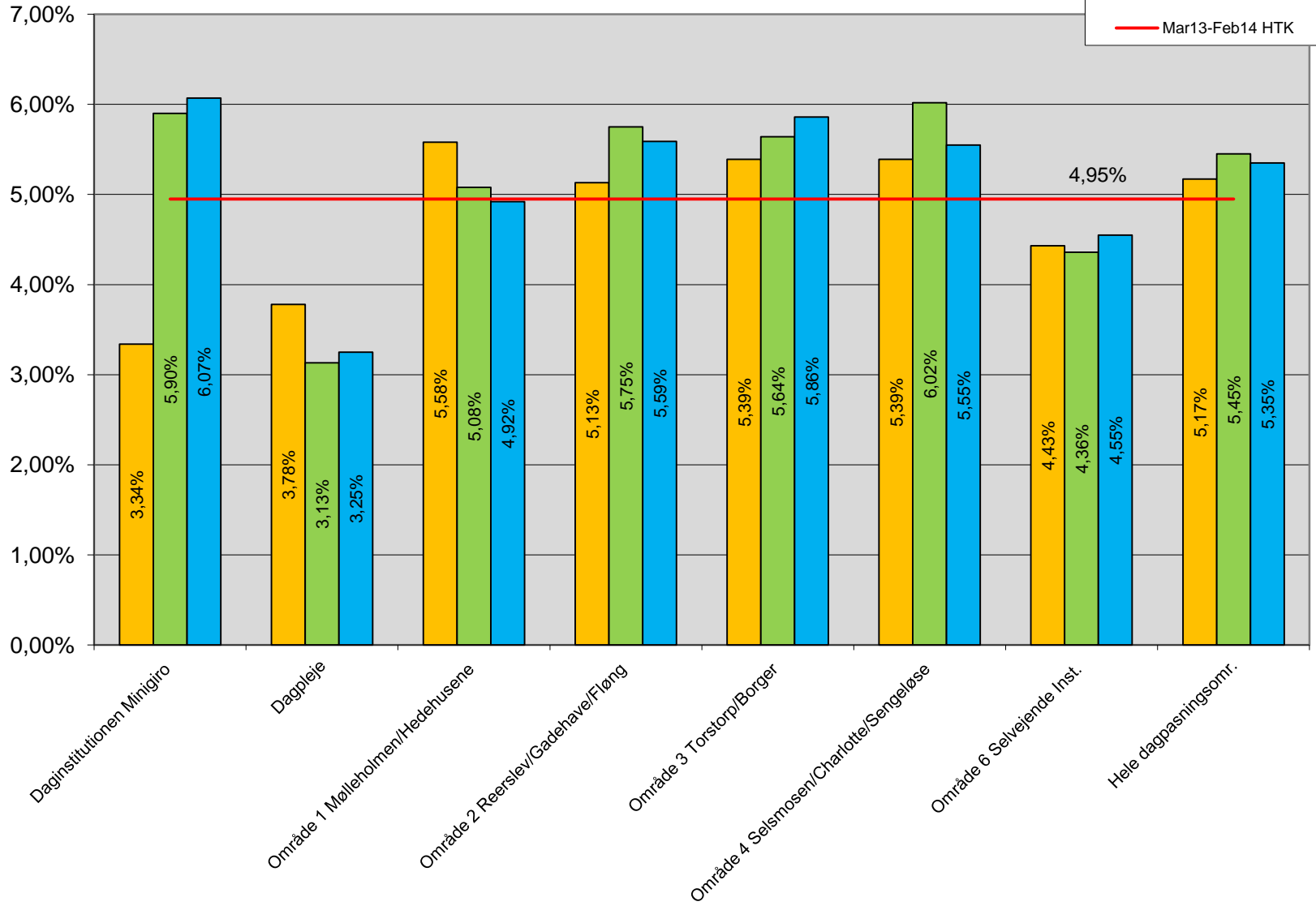




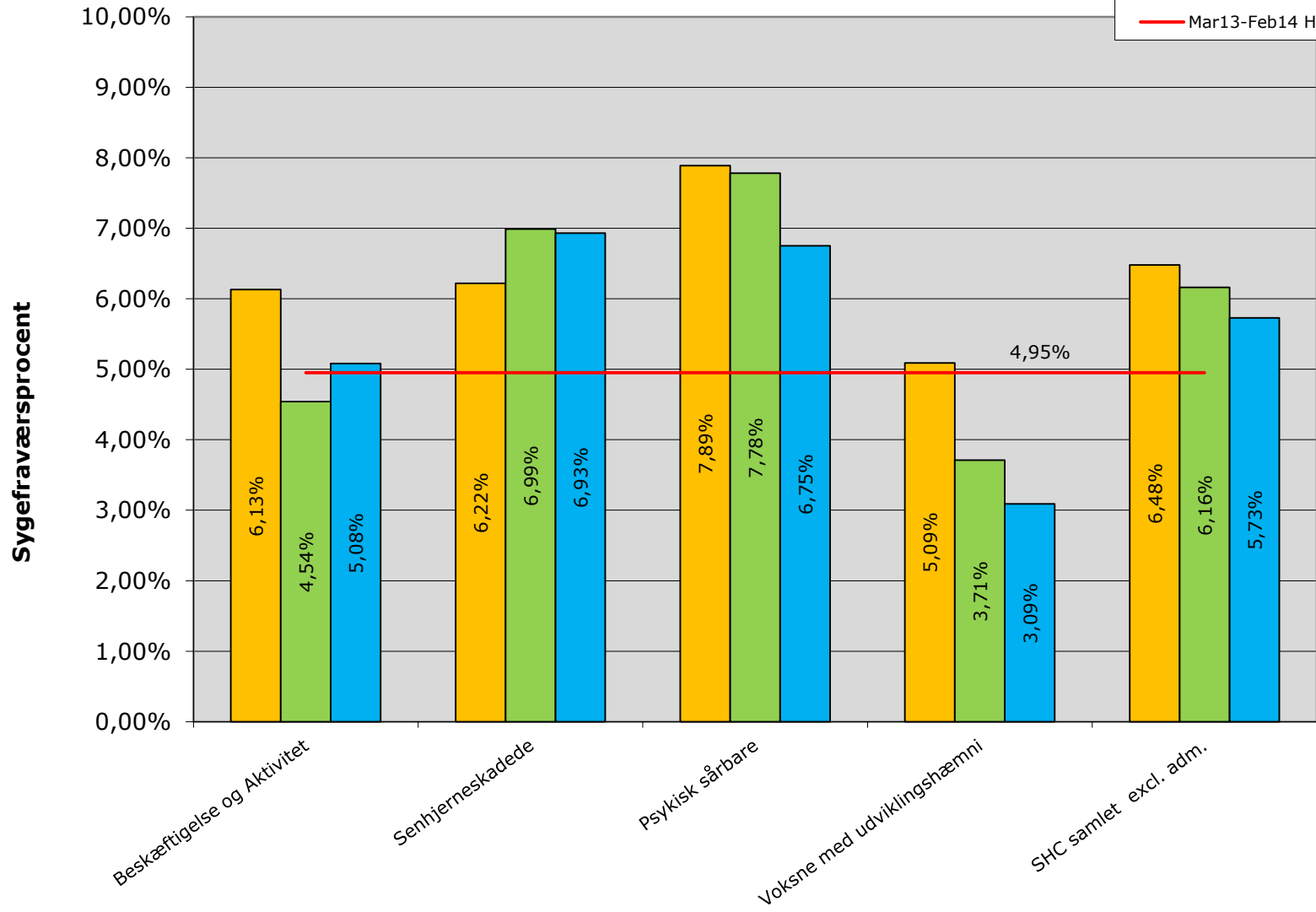
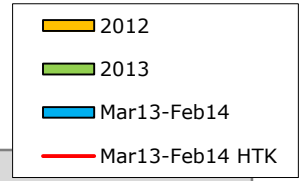
## Sygefraværsprocent 2012-2014 Dagpasning



**Sygefraværsprocent**

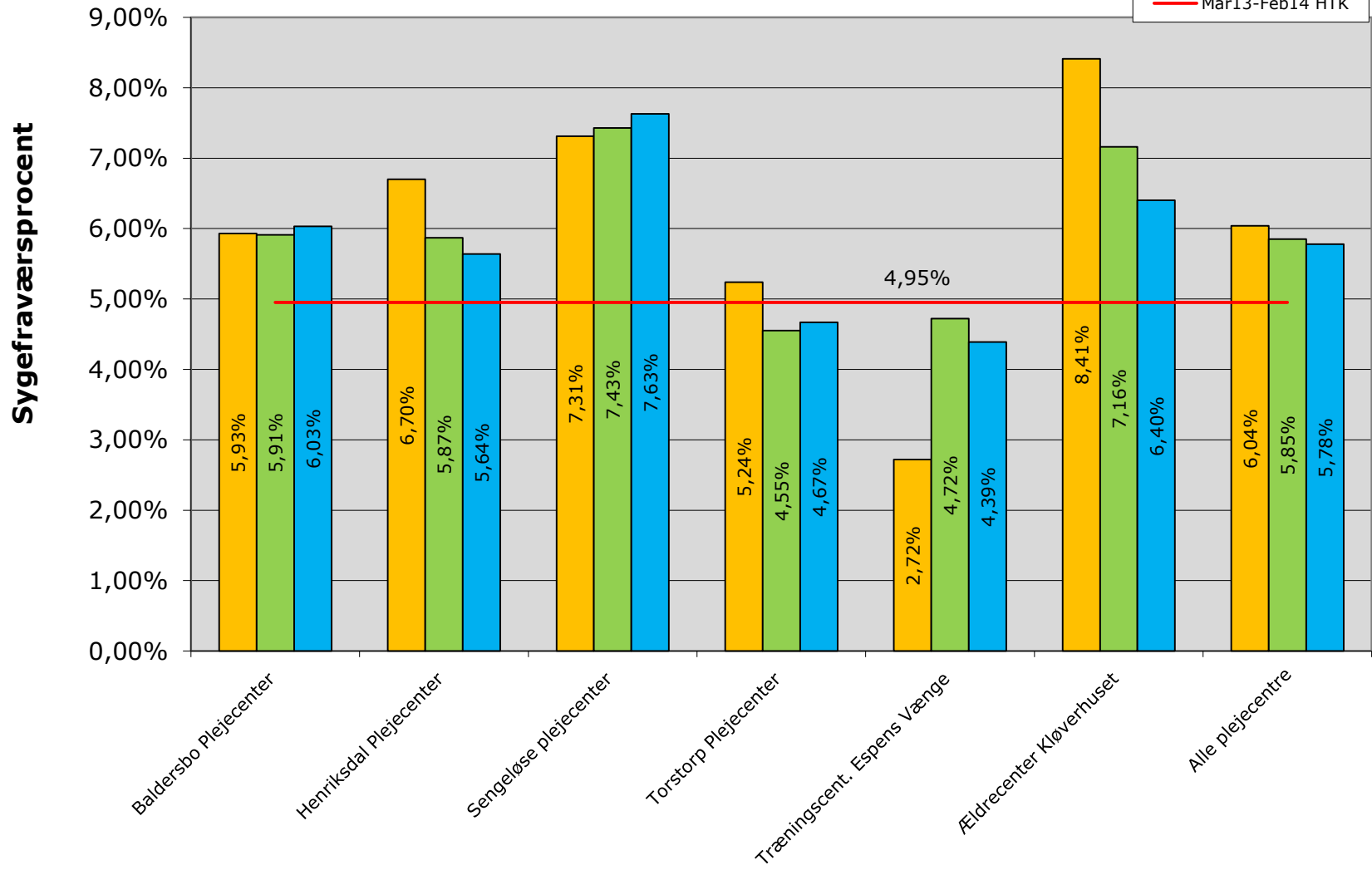


### Sygefraværsprocent 2012-2014 Social- og Handicapinstitutioner

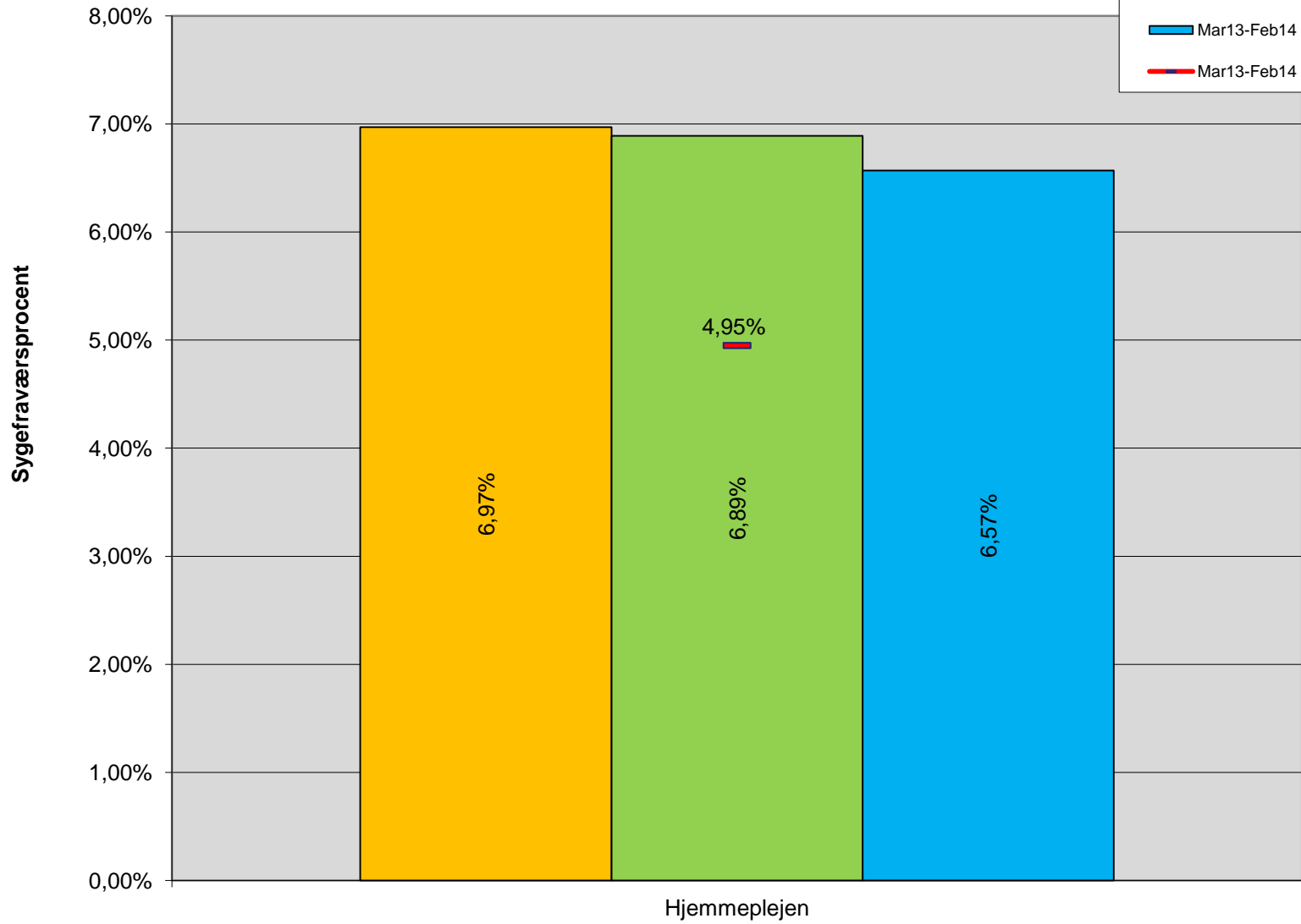
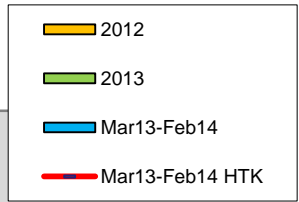


### Sygefraværsprocent 2012-2014 Plejecentre

- 2012
- 2013
- Mar13-Feb14
- Mar13-Feb14 HTK

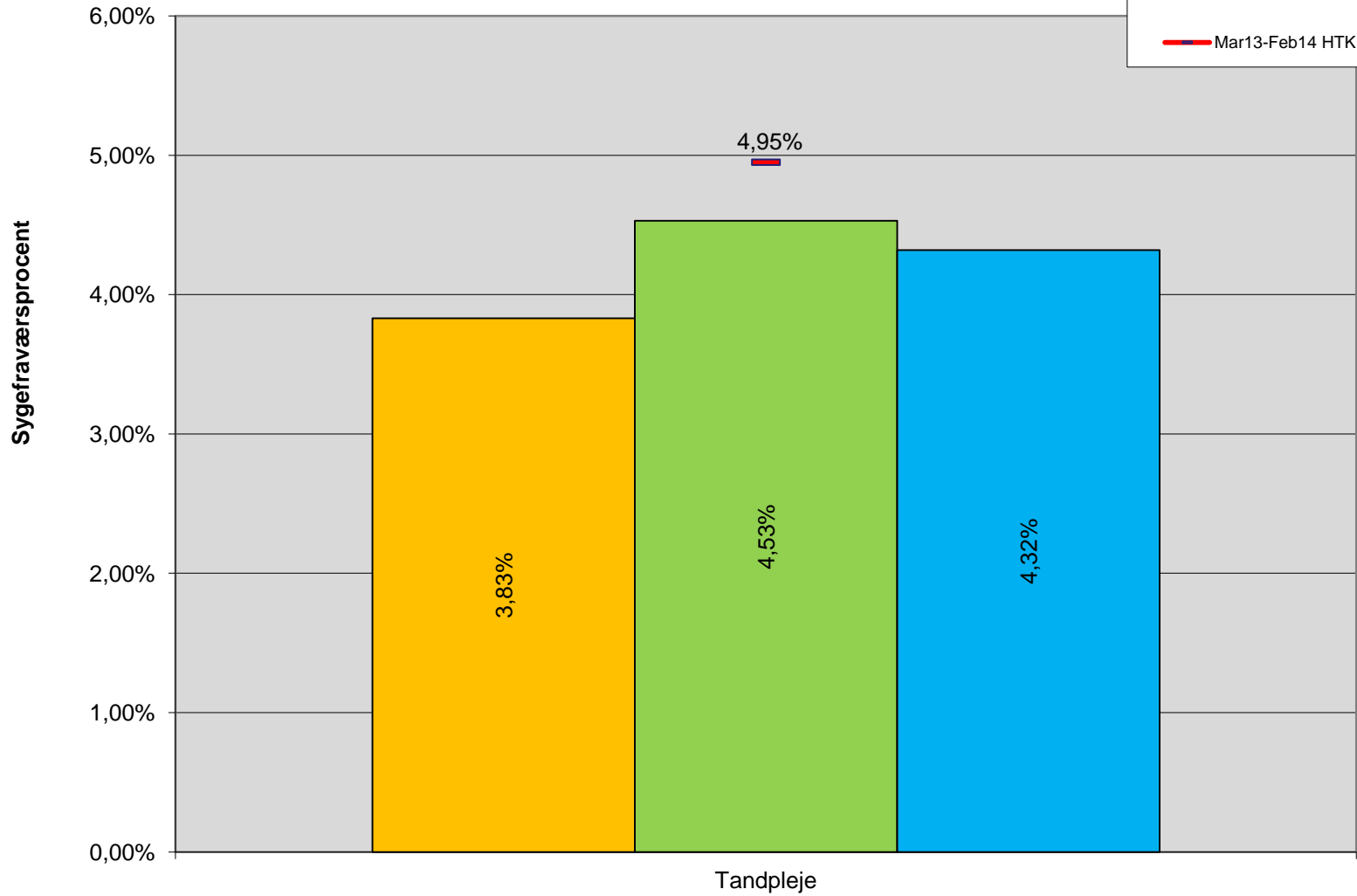


### Sygefraværsprocent 2012-2014 Hjemmeplejen

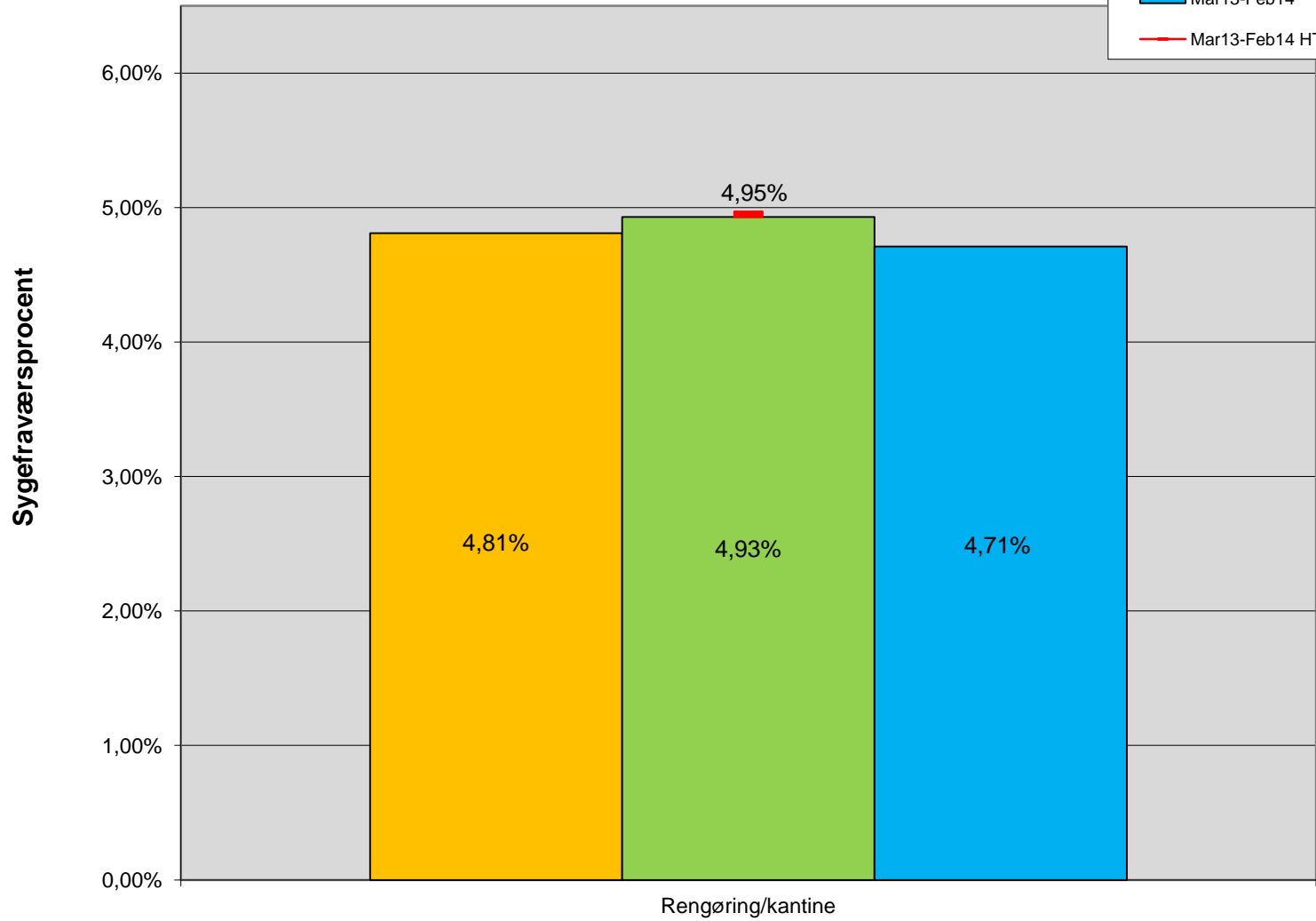
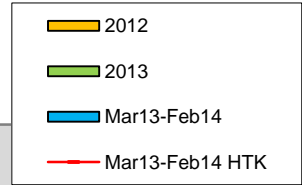


### Sygefraværsprocent 2012-2014 Tandpleje

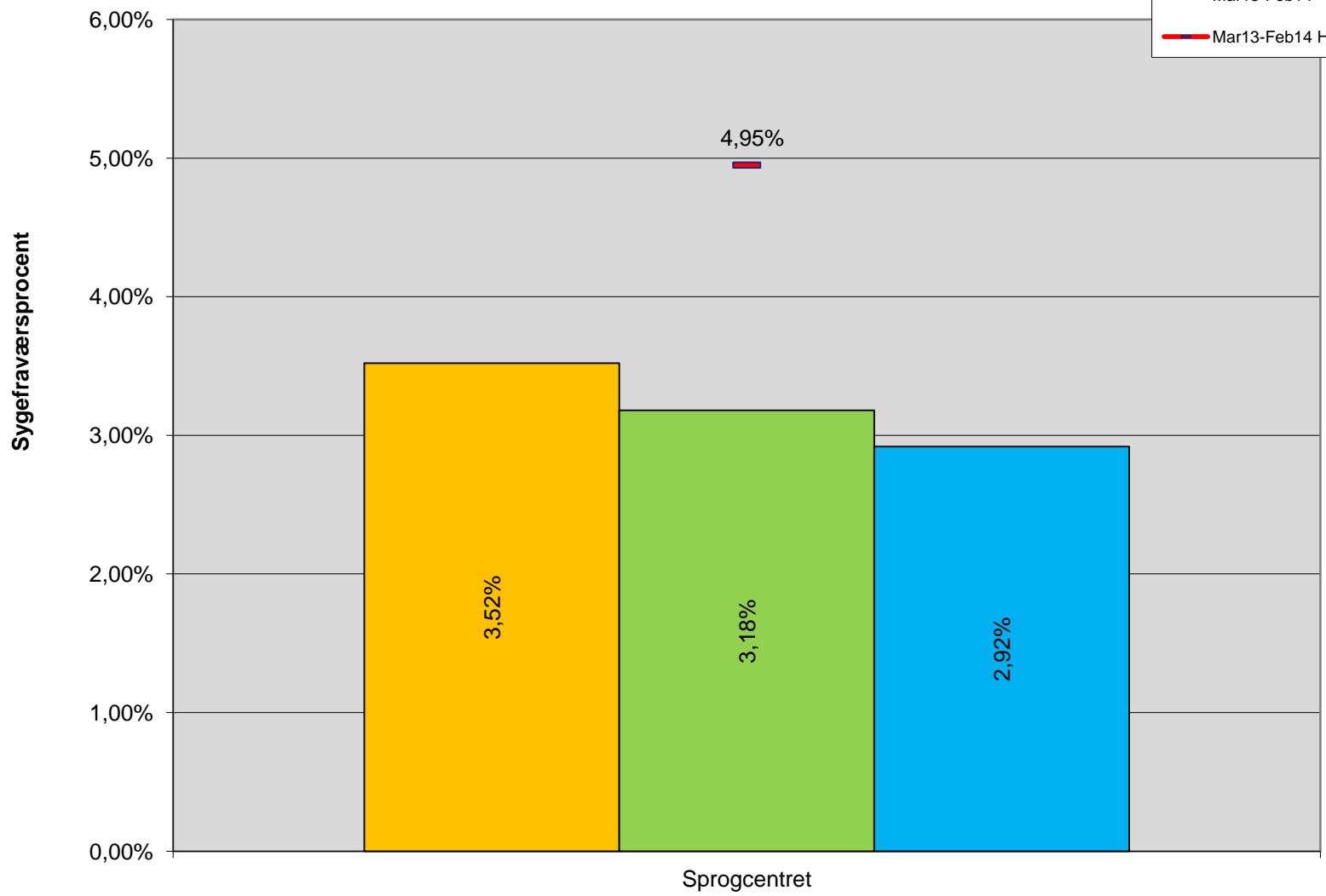
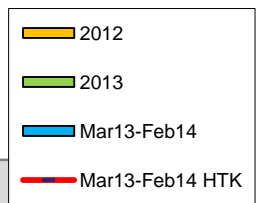
- 2012
- 2013
- Mar13-Feb14
- Mar13-Feb14 HTK



### Sygefraværsprocent 2012-2014 Rengøring/Kantine



### Sygefraværsprocent 2012-2014 Sprogcentret



## Sygefravær i procent pr. sektorområde og hele HTK 2012 og 2013

