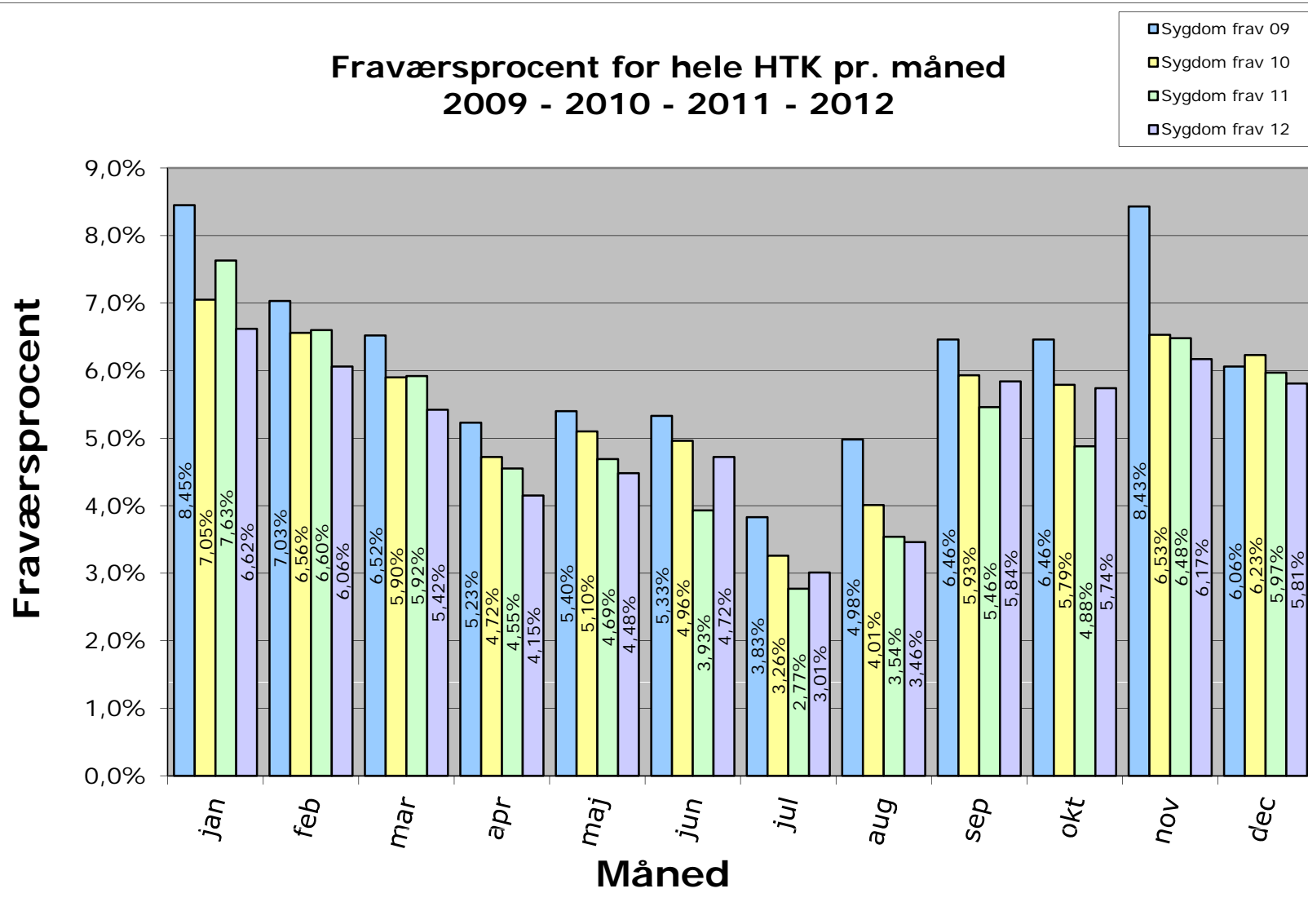


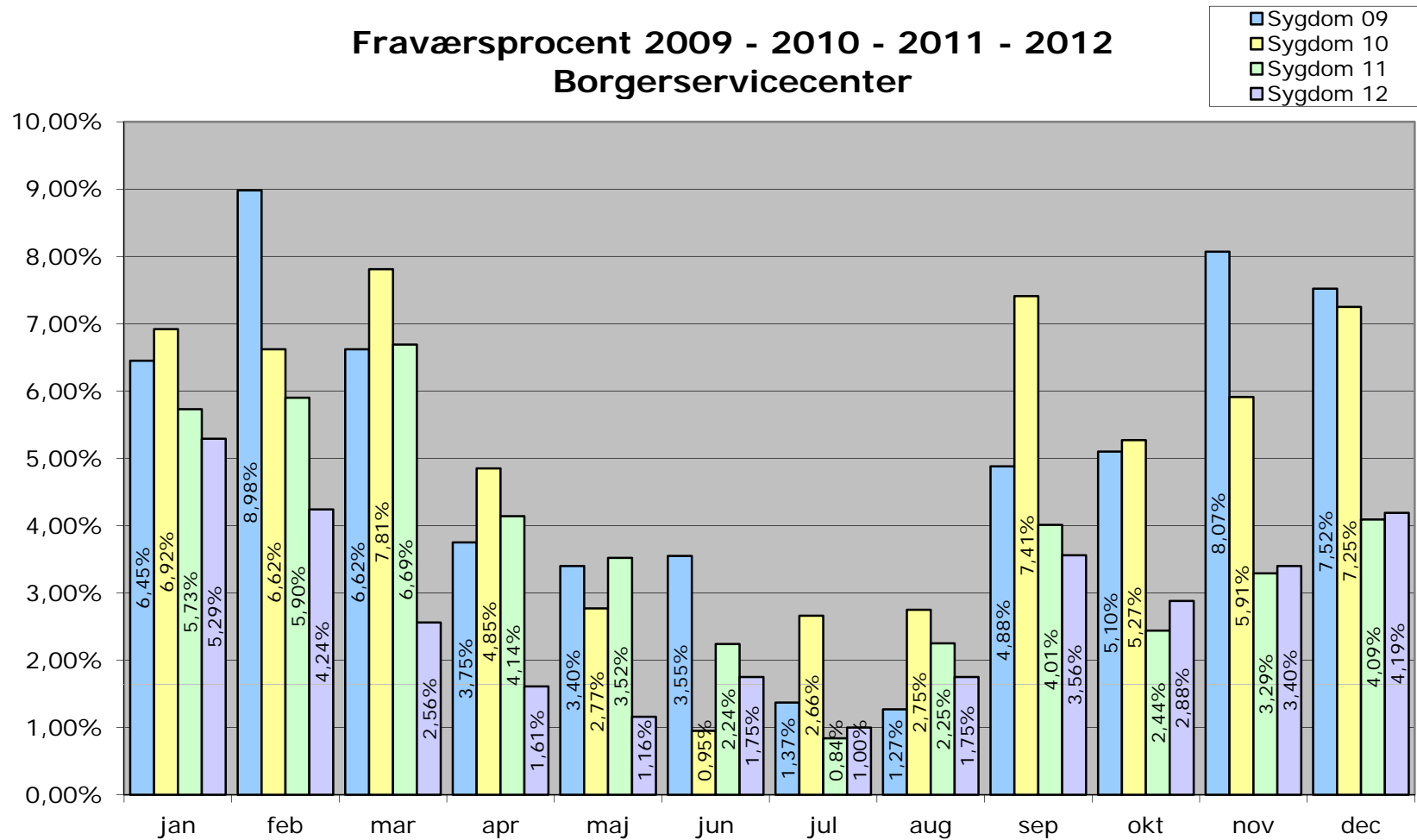


Fraværsprocent for hele HTK pr. måned 2009 - 2010 - 2011 - 2012



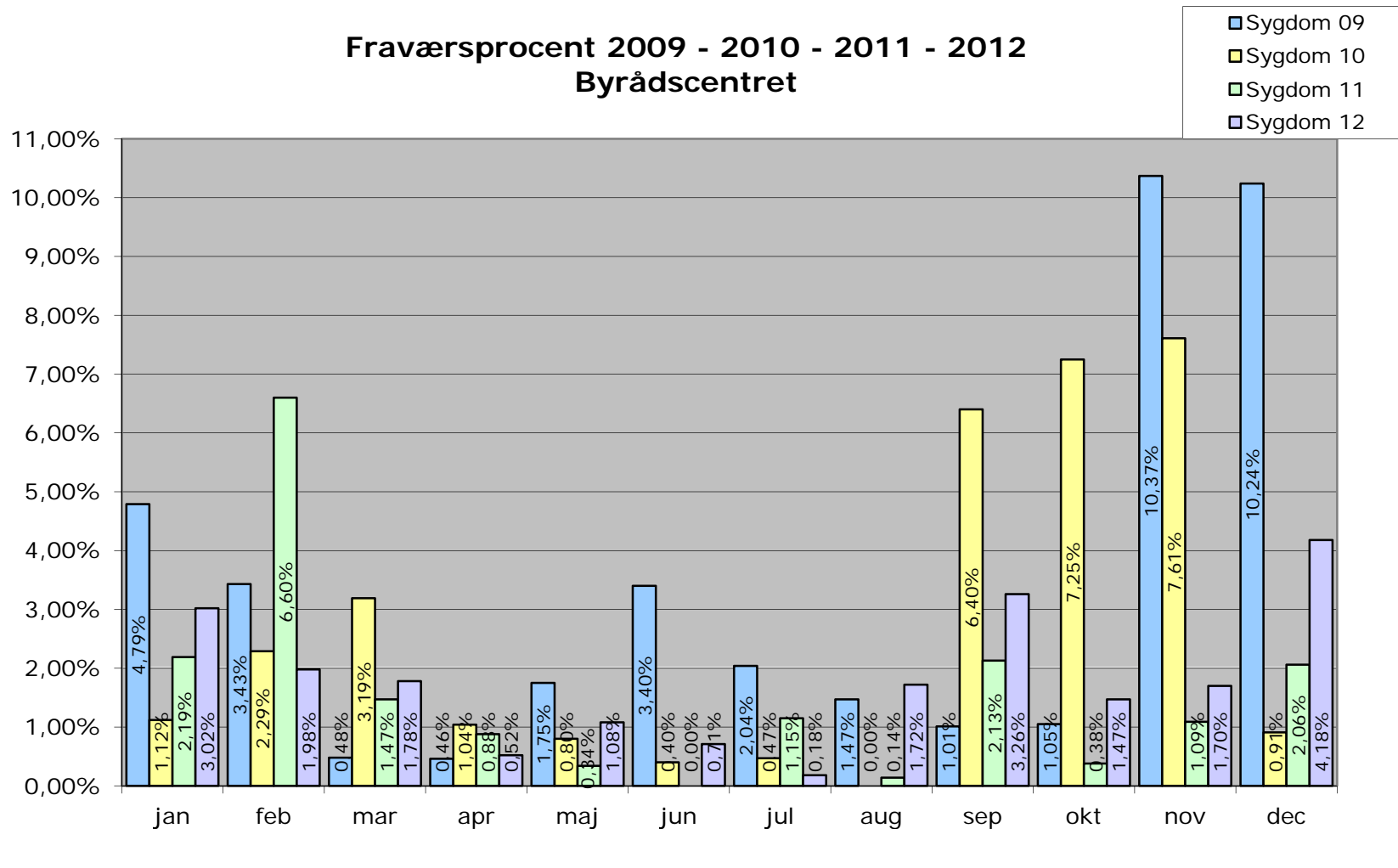


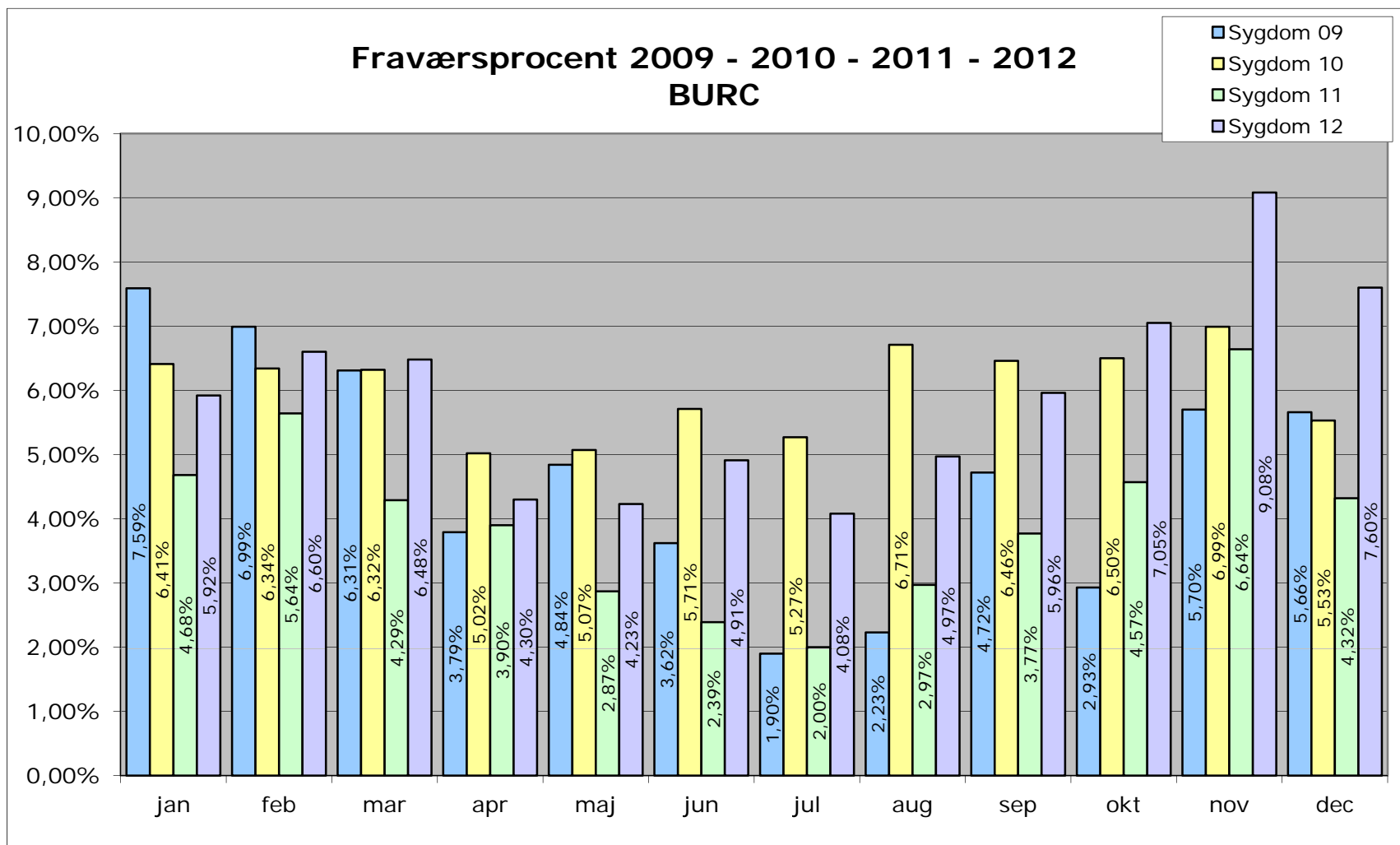
Fraværsprocent 2009 - 2010 - 2011 - 2012 Borgerservicecenter

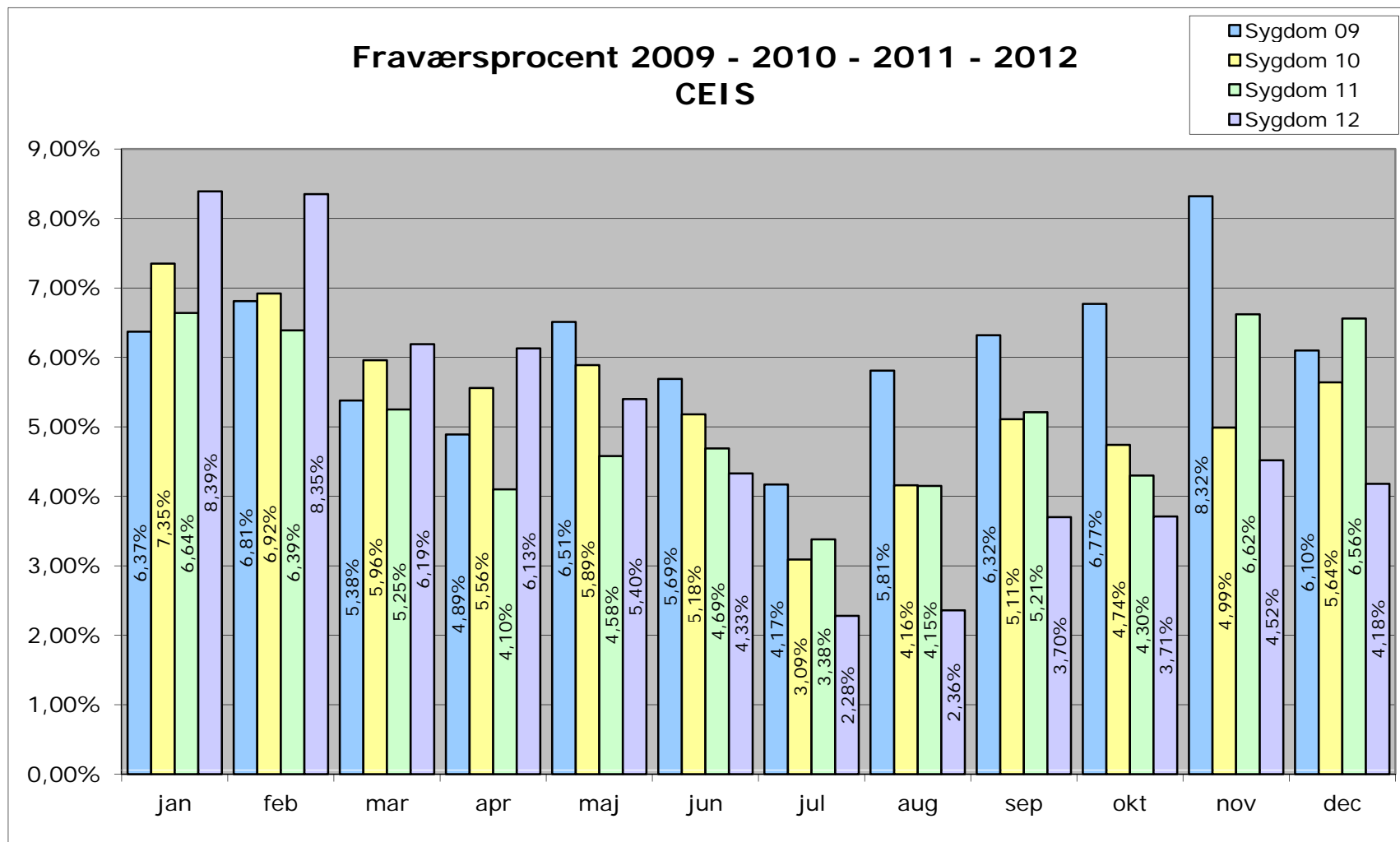


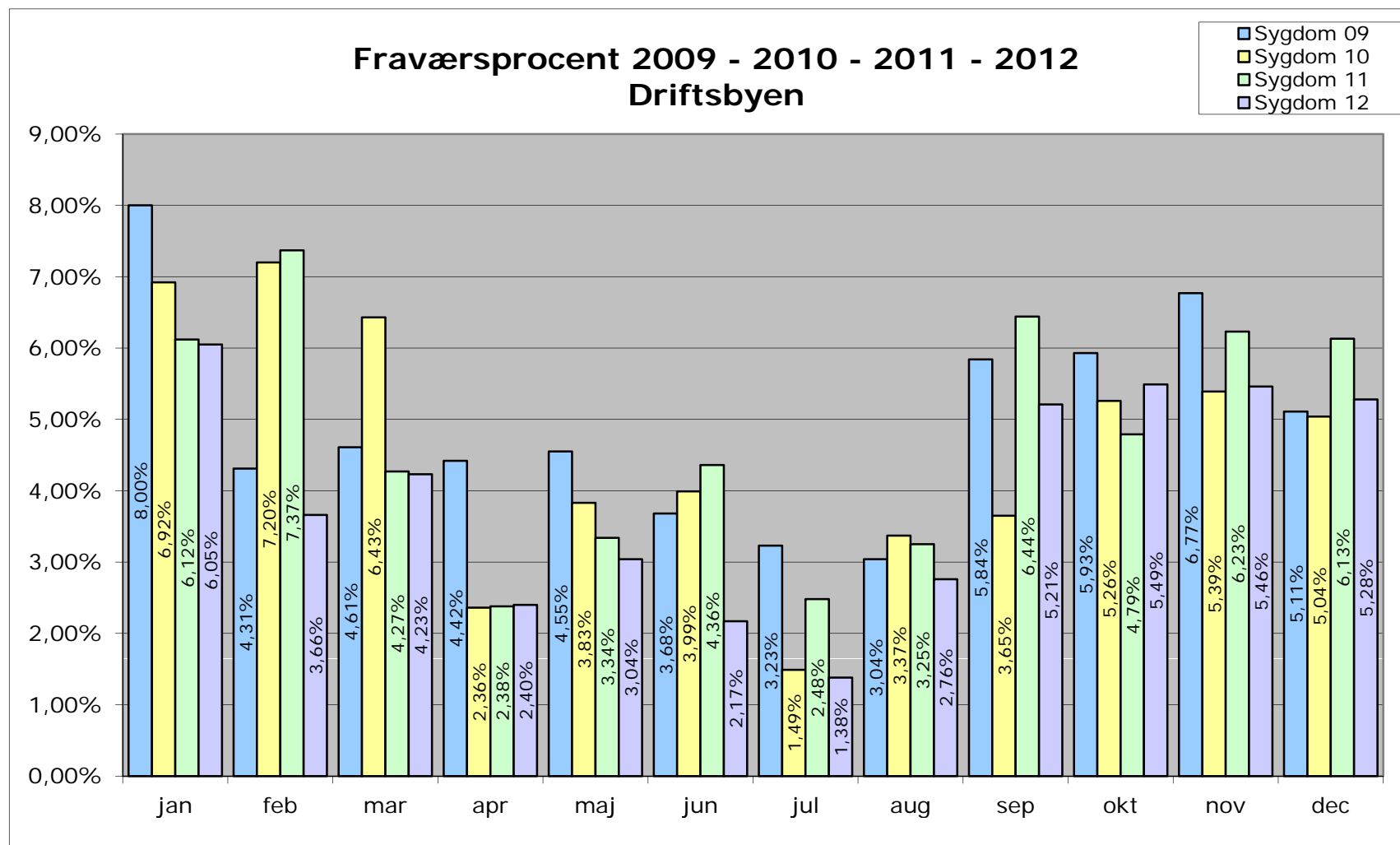


Fraværsprocent 2009 - 2010 - 2011 - 2012
Byrådscentret





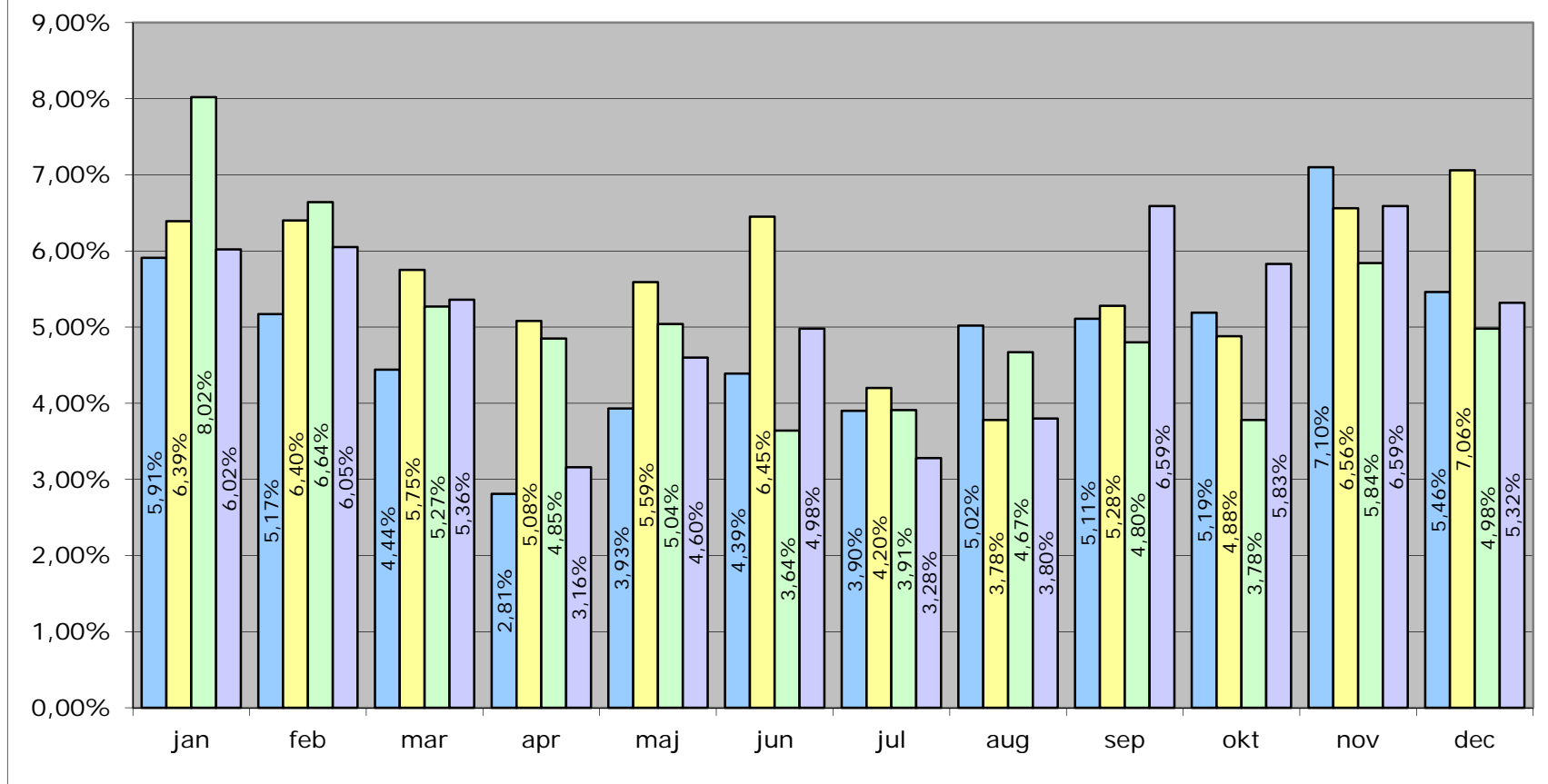


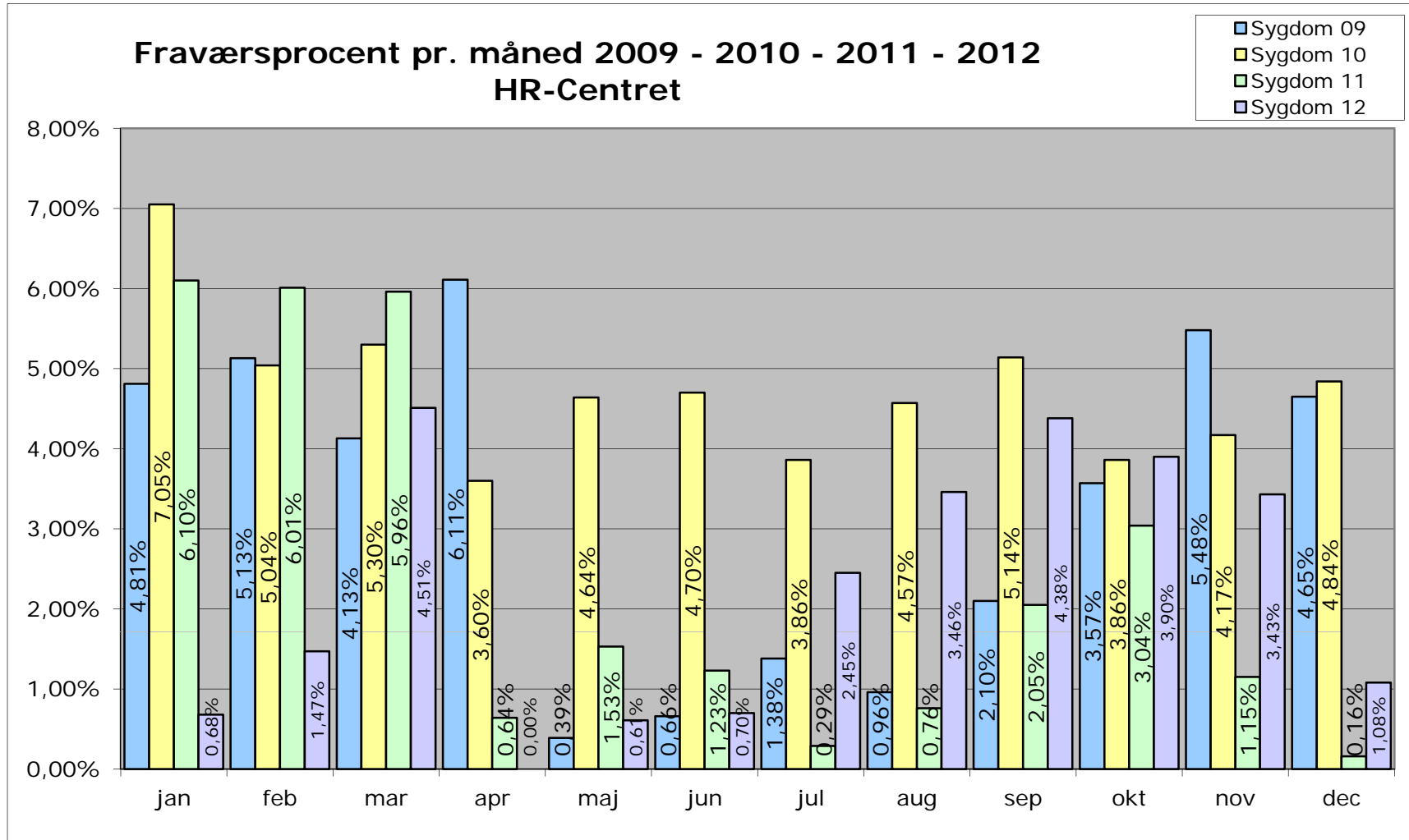




Fraværsporcet 2009 - 2010 - 2011 - 2012 Fritid og Kultur

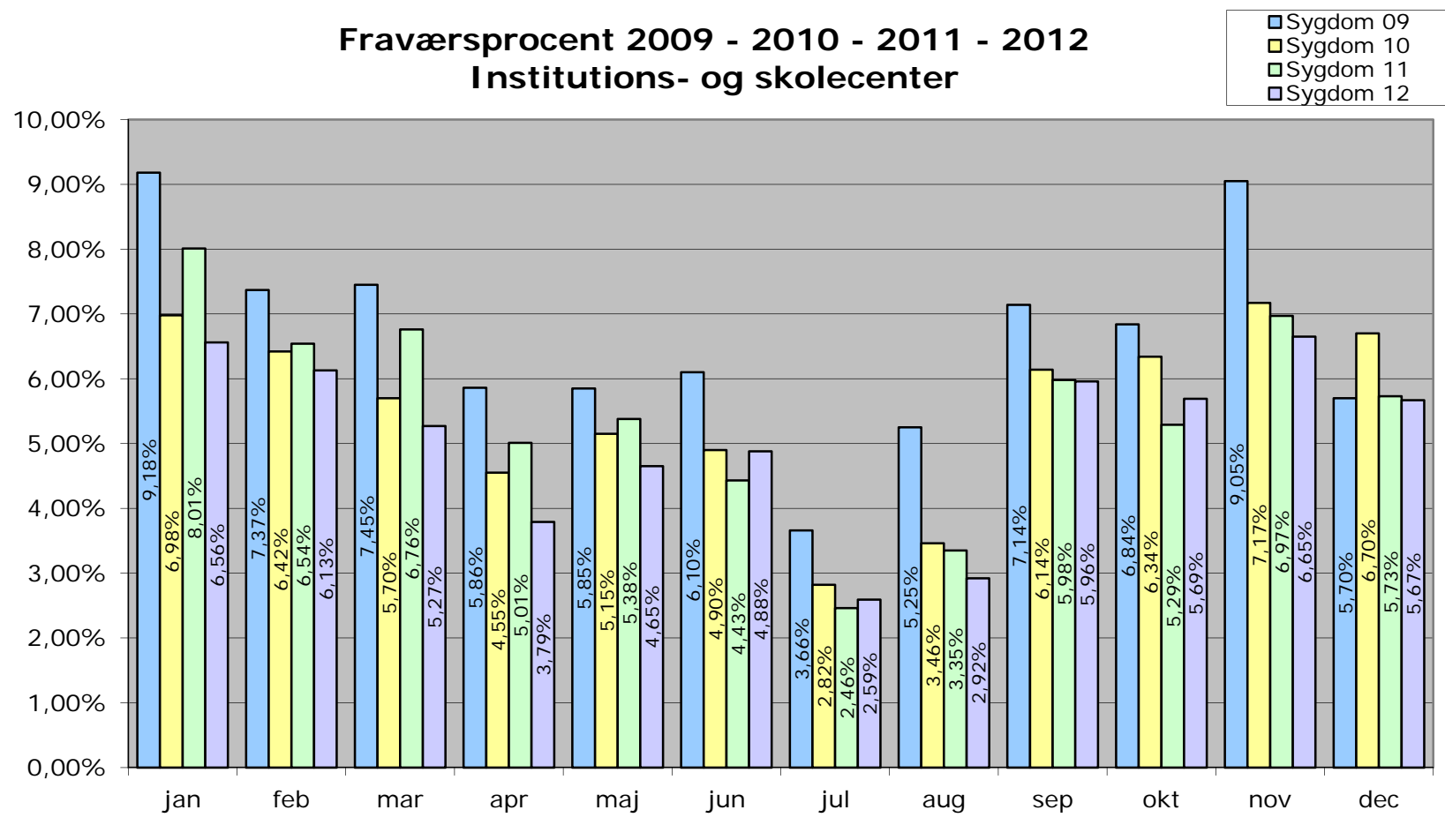
- Sygdcm 09
- Sygdcm 10
- Sygdcm 11
- Sygdcm 12





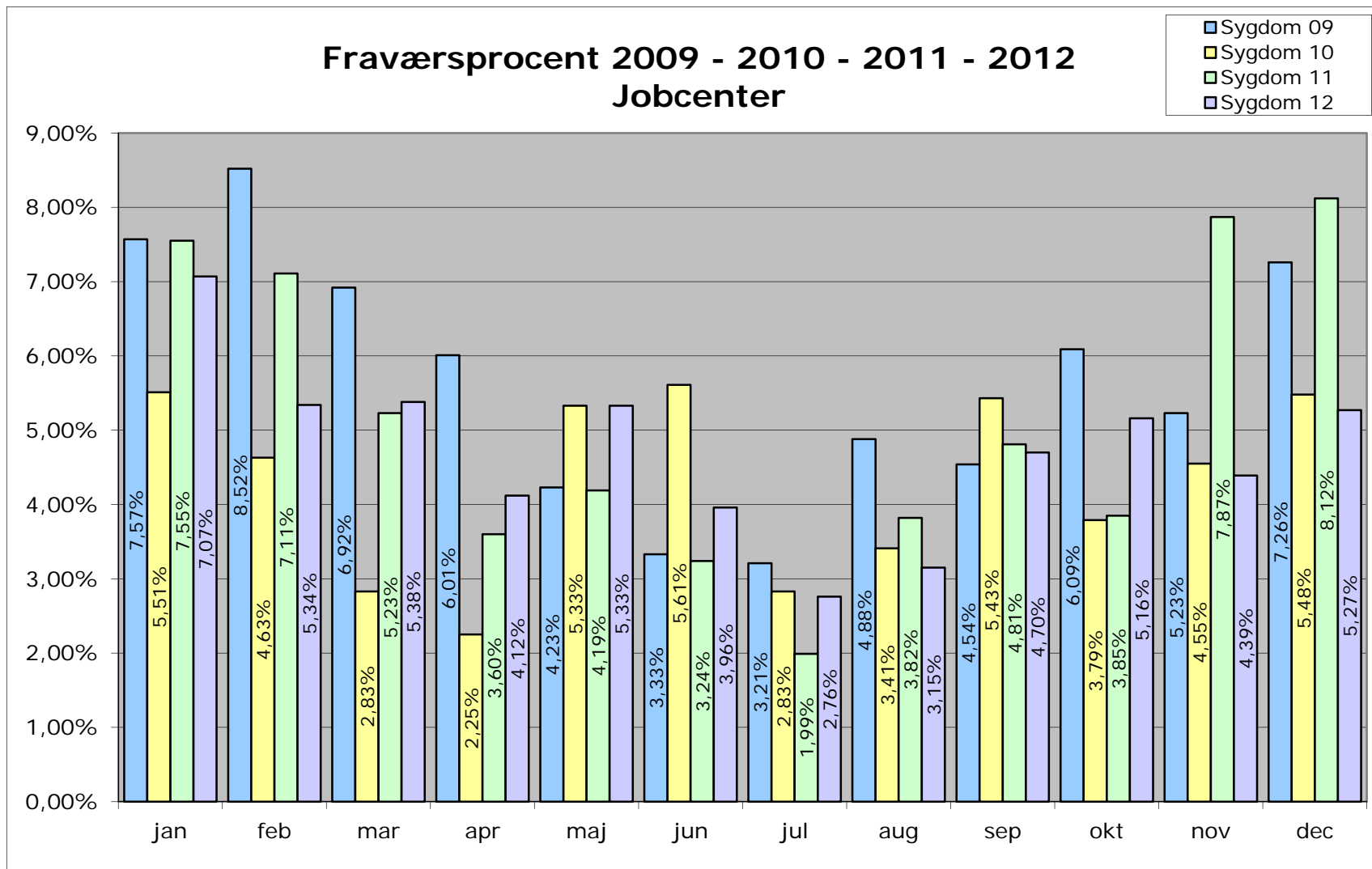


Fraværsprocent 2009 - 2010 - 2011 - 2012 Institutions- og skolecenter





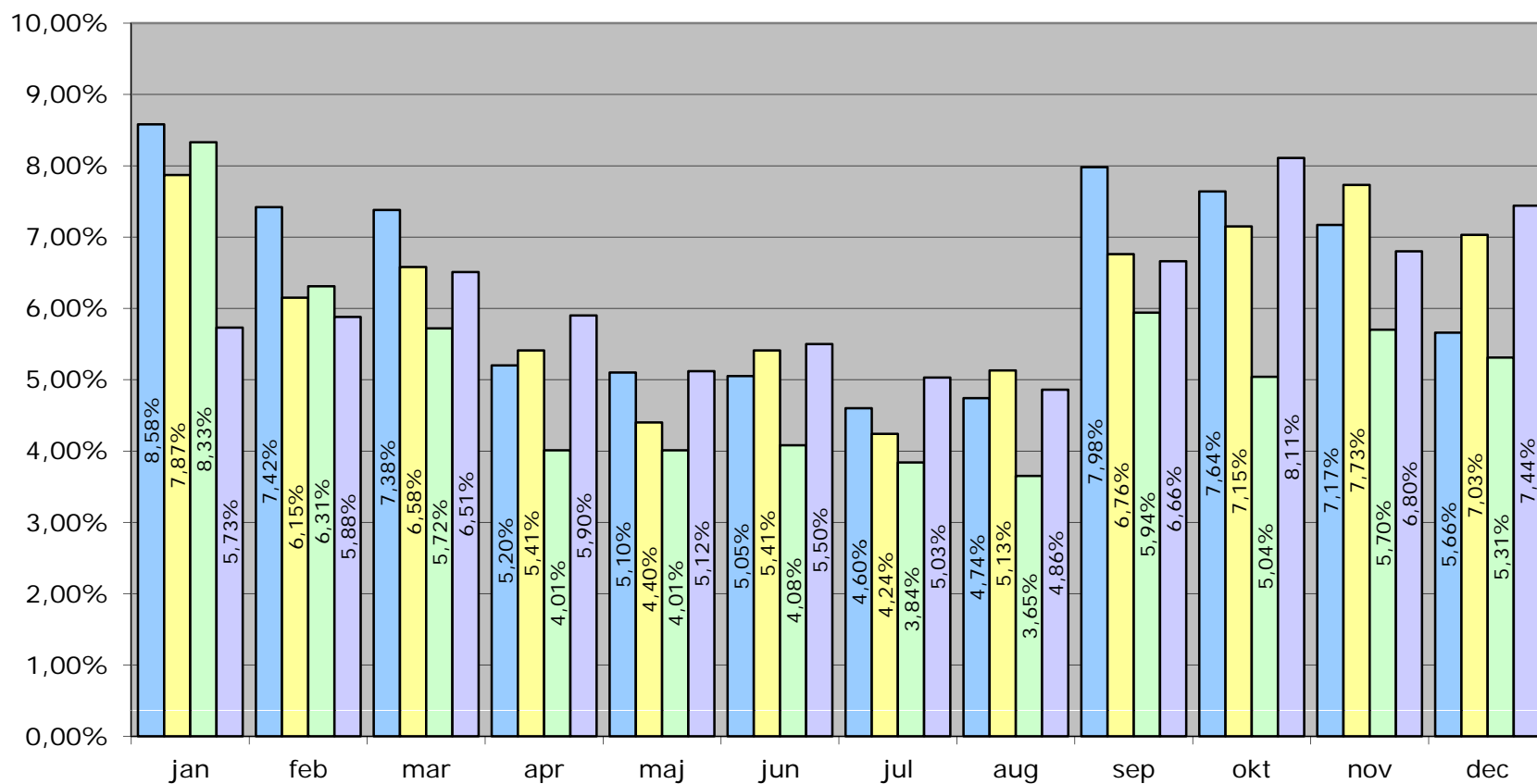
Fraværsprocent 2009 - 2010 - 2011 - 2012 Jobcenter

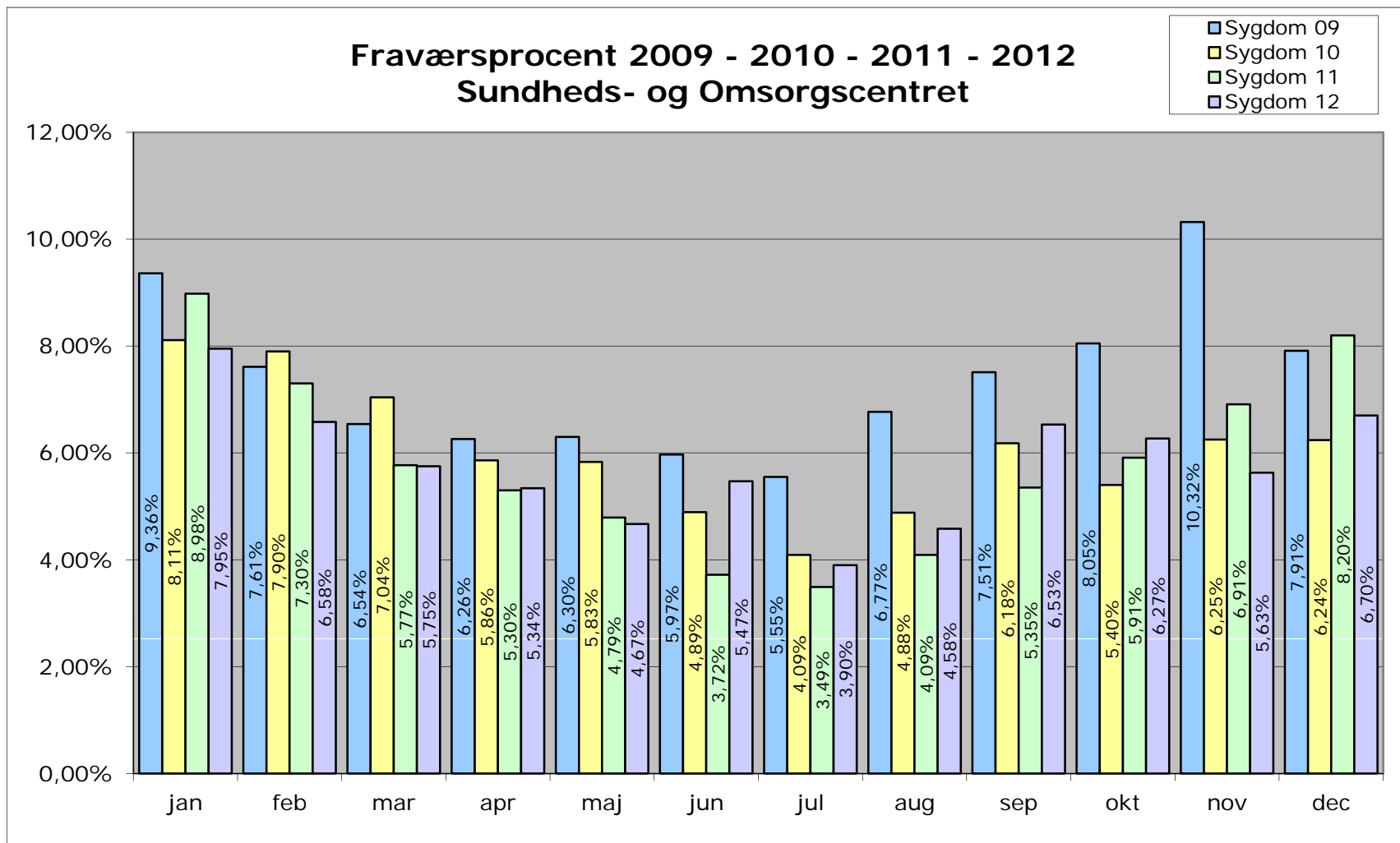


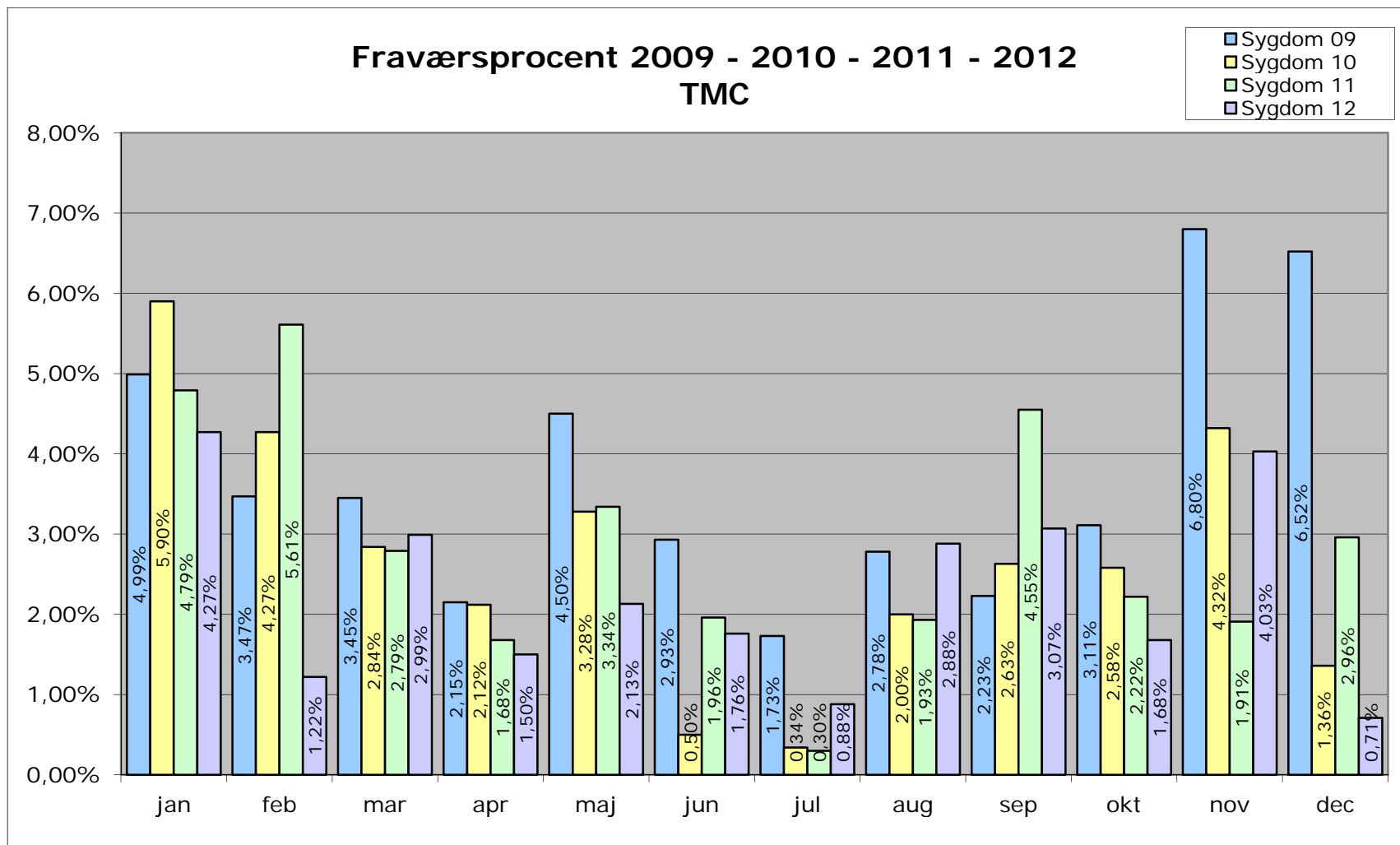


Fraværsprocent 2009 - 2010 - 2011 - 2012 Social- og Handicapcenter

- Sygdom 09
- Sygdom 10
- Sygdom 11
- Sygdom 12









Fraværsprocent 2009 - 2010 - 2011 - 2012 ØDC

